

Product datasheet for **TP305257L**

NAP1L2 (NM_021963) Human Recombinant Protein

Product data:

Product Type:	Recombinant Proteins
Description:	Recombinant protein of human nucleosome assembly protein 1-like 2 (NAP1L2), 1 mg
Species:	Human
Expression Host:	HEK293T
Expression cDNA Clone or AA Sequence:	>RC205257 protein sequence Red =Cloning site Green =Tags(s) MAKSENRKELSESSQEEAGNQIMVEGLGEHLERGEDAAAGLGDDGKCGEEAAAGLGEEGENGEDTAAGS G EDGKKGGDTDEDSEADRPKGLIGYVLDTDFVESLPVKVKYRVLALKKLQTRAANLESKFLREFHDIERKF AEMYQPLLEKRRQIINAIYEPTEECEYKSDSEDCDDEEMCHEEMYGNEEGMVHEYVDEDDGYEDYYYDY AVEEEEEEEEEEDDIEATGEENKEEEDPKGIPDFWLTVLKNVDTLTPLIKKYDEPILKLLTDIKVKLSDPG EPLSFTLEFHFKPNEYFKNELLTKTYVLKSKLAYDPPHYRGTAIEYSTGCEIDWNEGKNVTLKTIKKKQ KHRIWGTIRTVTEDFPKDSFFNFFSPHGITSNGRDGNDDFLLGHNLRTYIIPRSVLFFSGDALESQQEGV VREVNDAIYDKIYDNWMAAIEEVKACCKNLEALVEDIDR TRTRPLEQKLISEEDLAANDILDYKDDDDKV
Tag:	C-Myc/DDK
Predicted MW:	52.4 kDa
Concentration:	>0.05 µg/µL as determined by microplate BCA method
Purity:	> 80% as determined by SDS-PAGE and Coomassie blue staining
Buffer:	25 mM Tris-HCl, 100 mM glycine, pH 7.3, 10% glycerol
Preparation:	Recombinant protein was captured through anti-DDK affinity column followed by conventional chromatography steps.
Note:	For testing in cell culture applications, please filter before use. Note that you may experience some loss of protein during the filtration process.
Storage:	Store at -80°C.
Stability:	Stable for 12 months from the date of receipt of the product under proper storage and handling conditions. Avoid repeated freeze-thaw cycles.



[View online »](#)

RefSeq: [NP_068798](#)

Locus ID: 4674

UniProt ID: [Q9ULW6](#)

RefSeq Size: 2590

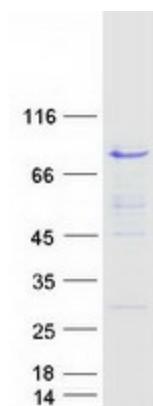
Cytogenetics: Xq13.2

RefSeq ORF: 1380

Synonyms: BPX

Summary: The protein encoded by this intronless gene is a member of the nucleosome assembly protein (NAP) family. The encoded protein represents a class of tissue-specific factors that interact with chromatin to regulate neuronal cell proliferation. [provided by RefSeq, Jan 2011]

Product images:



Coomassie blue staining of purified NAP1L2 protein (Cat# [TP305257]). The protein was produced from HEK293T cells transfected with NAP1L2 cDNA clone (Cat# [RC205257]) using MegaTran 2.0 (Cat# [TT210002]).