

Product datasheet for **TP305257**

NAP1L2 (NM_021963) Human Recombinant Protein

Product data:

Product Type: Recombinant Proteins

Description: Recombinant protein of human nucleosome assembly protein 1-like 2 (NAP1L2), 20 µg

Species: Human

Expression Host: HEK293T

Expression cDNA Clone or AA Sequence: >RC205257 protein sequence
Red=Cloning site **Green**=Tags(s)

MAKSENRKELSESSQEEAGNQIMVEGLGEHLERGEDAAAGLGDDGKCGEEAAAGLGEEGENGEDTAAGSG
EDGKKGDDTDEDSEADRPKGLIGYVLDTFVESLPVKVKYRVLALKKLQTRANLESKFLREFHDIERKF
AEMYQPLLEKRRQIINAIYEPTEECEYKSDSEDCDDEEMCHEEMYGNEEGMVHEYVDEDDGYEDYYDY
AVEEEEEEEEDDIEATGEENKEEDPKGIPDFWLTVLKNVDLTLPLIKKYDEPILKLLTDIKVKLSDPG
EPLSFTLEFHFKPNEYFKNELLTkTYVLKSKLAYDPPHYRGTAIEYSTGCEIDWNEGKNVTLKTIKKKQ
KHRIWGTIRTVTEDFPKDSFFNFFSPHGITSNGRDGNDDFLLGHNLRTYIIPRSVLFSSGDALESQQEGV
VREVNDAIYDKIYDNWMAAIEEVKACCKNLEALVEDIDR

TRTRPLEQKLISEEDLAANDILDYKDDDDKV

Tag: C-Myc/DDK

Predicted MW: 52.4 kDa

Concentration: >0.05 µg/µL as determined by microplate BCA method

Purity: > 80% as determined by SDS-PAGE and Coomassie blue staining

Buffer: 25 mM Tris-HCl, 100 mM glycine, pH 7.3, 10% glycerol

Preparation: Recombinant protein was captured through anti-DDK affinity column followed by conventional chromatography steps.

Note: For testing in cell culture applications, please filter before use. Note that you may experience some loss of protein during the filtration process.

Storage: Store at -80°C.

Stability: Stable for 12 months from the date of receipt of the product under proper storage and handling conditions. Avoid repeated freeze-thaw cycles.

RefSeq: [NP_068798](#)



[View online »](#)

Locus ID: 4674

UniProt ID: [Q9ULW6](#)

RefSeq Size: 2590

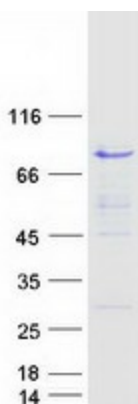
Cytogenetics: Xq13.2

RefSeq ORF: 1380

Synonyms: BPX

Summary: The protein encoded by this intronless gene is a member of the nucleosome assembly protein (NAP) family. The encoded protein represents a class of tissue-specific factors that interact with chromatin to regulate neuronal cell proliferation. [provided by RefSeq, Jan 2011]

Product images:



Coomassie blue staining of purified NAP1L2 protein (Cat# TP305257). The protein was produced from HEK293T cells transfected with NAP1L2 cDNA clone (Cat# [RC205257]) using MegaTran 2.0 (Cat# [TT210002]).