

Product datasheet for **TP305228**

KLHL11 (NM_018143) Human Recombinant Protein

Product data:

Product Type: Recombinant Proteins

Description: Recombinant protein of human kelch-like 11 (Drosophila) (KLHL11), 20 µg

Species: Human

Expression Host: HEK293T

Expression cDNA >RC205228 protein sequence

Clone or AA **Red**=Cloning site **Green**=Tags(s)

Sequence:

MAAAVAIAAAAAAAAAASLQVLEMESMETAAAGSAGLAAEVRGSGTVDFGPGPGISAMEASGGDPGPEAED
 FECSSHCELSWRQNEQRRQGLFCDITLCFGGAGGREFRAHRVLAATAEYFTPLLSGQFSESRSGRVEM
 RKWSSEPGPEPDTVEAVIEYMYTGRIRVSTGSVHEVLELADRFLRLKEFCGEFLKKKLHLSNCVAIHS
 LAHMYTSLQALKAADMIRRNFKVIQDEEYFPLFHLIRDWLSDEITVDSEEVLFETVLKWWQRNAEE
 RERYFEELFKLLRLSQMKPTYLTRHVKPERLVANNEVCVKLVADAVERHALRAENIQSGTCQHPTSHVSL
 LPRYGQNMVIMVIGGVSEGGDYLSECVGYFVDEDRWVNLPHIHNHLDGHAVAVTESYVVVAGSMPEGFA
 KTVRYNPNLNTWEHVCSLMTRKHSFGLTEVKGKLYSIGGHGNFSPGFKDVTYVNPELDQWHNLESAPKI
 LRDVKALAIEDRFVYIAARTPVDRDTEGLKAVITCYDTETRWQDQVDSLPLIDNYCFFQMSVNSNFYQ
 TASCCPKSYCLNEEA VRKIASQVSDEILESLPPEVLSIEGAAICYKDDVFIIGGWKNSDDIDKQYRKE
 AYRYCAERKRWMLLPPMPQPRCRATACHVRIPYRYLHGTQRYMPQNLMLWQKDRIRQMQEIHRRHALNMRR
 VPSSQIEC

TRTRPLEQKLISEEDLAANDILDYKDDDDKV

Tag: C-Myc/DDK

Predicted MW: 80 kDa

Concentration: >0.05 µg/µL as determined by microplate BCA method

Purity: > 80% as determined by SDS-PAGE and Coomassie blue staining

Buffer: 25 mM Tris-HCl, 100 mM glycine, pH 7.3, 10% glycerol

Preparation: Recombinant protein was captured through anti-DDK affinity column followed by conventional chromatography steps.

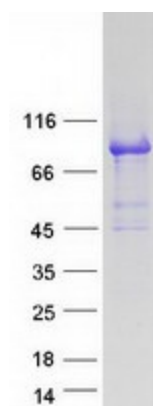
Note: For testing in cell culture applications, please filter before use. Note that you may experience some loss of protein during the filtration process.

Storage: Store at -80°C.



[View online »](#)

Stability:	Stable for 12 months from the date of receipt of the product under proper storage and handling conditions. Avoid repeated freeze-thaw cycles.
RefSeq:	NP_060613
Locus ID:	55175
UniProt ID:	Q9NVR0 , A0A024R1T8
RefSeq Size:	2326
Cytogenetics:	17q21.2
RefSeq ORF:	2124
Summary:	Component of a cullin-RING-based BCR (BTB-CUL3-RBX1) E3 ubiquitin-protein ligase complex that mediates the ubiquitination of target proteins, leading most often to their proteasomal degradation.[UniProtKB/Swiss-Prot Function]
Protein Families:	Secreted Protein

Product images:

Coomassie blue staining of purified KLHL11 protein (Cat# TP305228). The protein was produced from HEK293T cells transfected with KLHL11 cDNA clone (Cat# [RC205228]) using MegaTran 2.0 (Cat# [TT210002]).