

Product datasheet for **TP305227**

LRRC20 (NM_207119) Human Recombinant Protein

Product data:

Product Type:	Recombinant Proteins
Description:	Recombinant protein of human leucine rich repeat containing 20 (LRRC20), transcript variant 1, 20 µg
Species:	Human
Expression Host:	HEK293T
Expression cDNA Clone or AA Sequence:	>RC205227 protein sequence Red =Cloning site Green =Tags(s)

MLKKMGEAVARVARKVNETVESGSDTLDLAECKLVSPIGIYKVLNRNVSGQIHLITLANNELKSLTSKFM
TTFSQLRELHLEGNLFHRLPSEVSALQHLKAIDLSRNQFQDFPEQLTALPALETINLEENEIVDVPVEKL
AAMPALRSINLRFNPLNAEVRVIAPPLIKFDMLMSPEGARAPLP

TRTRPLEQKLISEEDLAANDILDYKDDDDKV

Tag:	C-Myc/DDK
Predicted MW:	20.3 kDa
Concentration:	>0.05 µg/µL as determined by microplate BCA method
Purity:	> 80% as determined by SDS-PAGE and Coomassie blue staining
Buffer:	25 mM Tris-HCl, 100 mM glycine, pH 7.3, 10% glycerol
Preparation:	Recombinant protein was captured through anti-DDK affinity column followed by conventional chromatography steps.
Note:	For testing in cell culture applications, please filter before use. Note that you may experience some loss of protein during the filtration process.
Storage:	Store at -80°C.
Stability:	Stable for 12 months from the date of receipt of the product under proper storage and handling conditions. Avoid repeated freeze-thaw cycles.
RefSeq:	NP_997002
Locus ID:	55222
UniProt ID:	Q8TCA0 , A0A024QZM2



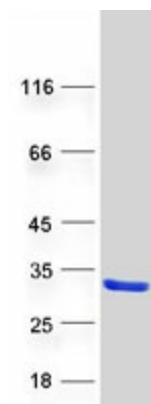
[View online »](#)

RefSeq Size: 3428

Cytogenetics: 10q22.1

RefSeq ORF: 552

Product images:



Coomassie blue staining of purified LRRC20 protein (Cat# TP305227). The protein was produced from HEK293T cells transfected with LRRC20 cDNA clone (Cat# [RC205227]) using MegaTran 2.0 (Cat# [TT210002]).