

## Product datasheet for **TP305225M**

### OGDHL (NM\_018245) Human Recombinant Protein

#### Product data:

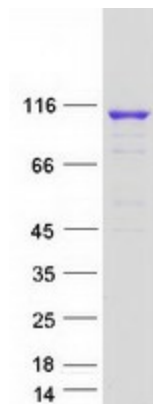
Product Type:	Recombinant Proteins
Description:	Recombinant protein of human oxoglutarate dehydrogenase-like (OGDHL), transcript variant 1, 100 µg
Species:	Human
Expression Host:	HEK293T
Expression cDNA Clone or AA Sequence:	>RC205225 protein sequence <b>Red</b> =Cloning site <b>Green</b> =Tags(s)
	<p>MSQLRLLPSRLGVQAARLLAAHDVPVFGWRSRSGPPATFPSSKGGGGSSYMEEMYFAWLENPQSVHKSW DSFFREASEEAFSGSAQPRPPSVHESRSVSSRTKTSKLVEDHLAVQSLIRAYQIRGHHVAQLDPLGIL DADLDSFVPSDLITTIDKLAFYDLQEADLDFEQLPTTTFIGGSENTLSLREIRRLENTYCYHIGLEFM FINDVEQCQWIRQKFETPGVMQFSSEEKRTLLARLVRSMRFEDFLARKWSEKRFLEGCEVMIPALKTI IDKSSEMGIENVILGMPHRGRNLNLANVIRKDLQIFCQFDPKLEAADEGSGDVKYHLGMYHERINRVTN RNITLSLVANPSHLEAVDPVVGKTKAEQFYRGDAQGGKVMVILVHGDAAFAGQGVVYETFHLSLDLPSYT TNGTVHVVVNNQIGFTTDPMARSSPYPTDVARVVNAPIFHVNADDPEAVIYVCSVAAEWRNTFNKDVVV DLVCYRRRRGHNEMDEPMFTQLLMYKQIHRQVPVLKKYADKLIAEGVTTLQEFEEIYAKYDRICEEAYGRS KDKKILHIKHWLNSPWPGFFNVDGEPKSMTCPATGIPEDMLTHIGSVASSVPLEDFKIHTGLSRILRGRA DMTKNRTVDWALAEYMAFGSLLKEGIHVRLSGQDVERGTFSHRHHVLHDQEVDRRTCVPMNHLWPDQAPY TVCNSSLSEYGVLFELGYAMASPNALVLWEAQFGDFHNTAQCIIDQFISTGQAKWVRHNGIVLLLPHGM EGMGPEHSSARPERFLQMSNDDSDAYPAFTKDFEVSQLYDCNWIVVNCSTPANYFHVLRQILLPFRKPL IIFTPKSLLRHPEAKSSFDQMVSQTSFQRVIPEDGAAARAPEQVQRLIFCTGKVYYDLVKERSSQDLEEK VAITRLEQISPFDFDLIKQEAEKYPGAELAWCQEEHKNMGYDYISPRFMTILRRARPIWYVGRDPAAP ATGNRNTHLVSLKKFLDTAFNLQAFEGKTF</p> <p><b>TRTRPLEQKLISEEDLAANDILDYKDDDDKV</b></p>
Tag:	C-Myc/DDK
Predicted MW:	114.3 kDa
Concentration:	>0.05 µg/µL as determined by microplate BCA method
Purity:	> 80% as determined by SDS-PAGE and Coomassie blue staining
Buffer:	25 mM Tris-HCl, 100 mM glycine, pH 7.3, 10% glycerol



[View online »](#)

<b>Preparation:</b>	Recombinant protein was captured through anti-DDK affinity column followed by conventional chromatography steps.
<b>Note:</b>	For testing in cell culture applications, please filter before use. Note that you may experience some loss of protein during the filtration process.
<b>Storage:</b>	Store at -80°C.
<b>Stability:</b>	Stable for 12 months from the date of receipt of the product under proper storage and handling conditions. Avoid repeated freeze-thaw cycles.
<b>RefSeq:</b>	<a href="#">NP_060715</a>
<b>Locus ID:</b>	55753
<b>UniProt ID:</b>	<a href="#">Q9ULD0</a>
<b>RefSeq Size:</b>	3774
<b>Cytogenetics:</b>	10q11.23
<b>RefSeq ORF:</b>	3030
<b>Summary:</b>	The protein encoded by this gene is similar to oxoglutarate dehydrogenase (OGDH) of the OGDH complex, which degrades glucose and glutamate. This gene encodes several isoforms, including some that appear to localize to mitochondria. The encoded protein down-regulates the AKT signaling cascade and can suppress the growth of cervical cancer cells. [provided by RefSeq, Dec 2016]
<b>Protein Pathways:</b>	Citrate cycle (TCA cycle), Lysine degradation, Metabolic pathways, Tryptophan metabolism

### Product images:



Coomassie blue staining of purified OGDHL protein (Cat# [TP305225]). The protein was produced from HEK293T cells transfected with OGDHL cDNA clone (Cat# [RC205225]) using MegaTran 2.0 (Cat# [TT210002]).