

Product datasheet for **TP305222M**

KLHL26 (NM_018316) Human Recombinant Protein

Product data:

Product Type: Recombinant Proteins
Description: Recombinant protein of human kelch-like 26 (Drosophila) (KLHL26), 100 µg
Species: Human
Expression Host: HEK293T
Expression cDNA >RC205222 protein sequence
Clone or AA Sequence: **Red**=Cloning site **Green**=Tags(s)

MAESGGSSGGAGGGGAFGAGPGERPNSTADKNGALKCTFSAPSHSTSLQGLATLRAQGQLLDVLTIN
REAFPAHKVLAACSDYFRAMFTGGMREASQDVIELKGVSRGLRHIIDFAYSAEVTLDLDCVQDVLGAA
VFLQMLPVVELCEEFLKAAMSVETCLNIGQMATTFFSLASLRESVDAFTFRHFLQIAEEEDFLRLPLERLV
FFLQSNRLQSCAEIDLFAAVRWLQHDPARRPRASHVLCHIRFPLMQSSELVDSVQTLDIMVEDVLCRQY
LLEAFNYQVLPFRQHMQSPRTAVRSDVPSLVTFGGTPYTDSDRSVSSKVYQLPEPGARHFRELTEMEVG
CSHTCVAVLDNFVYVAGGQHLQYRSGEGAVDACRYRDPHLNRWLRLQAMQESRIQFQLNVLCGMVYATGG
RNRAGSLASVERYCPRRNEWGYACSLKRRTWGHAGAASGGRLYISGGYGISVEDKKALHCYDPVADQWEF
KAPMSEPRVLHAMVGAGGRIYALGGRMDHVDRCFDVLAVEYYVPETDQWTSMSMPMRAGQSEAGCCLLERK
IYVGGYNWRLNNTGIVQVYNTDTEWERDLHFPEFAGIACAPVLLPRAGTRR

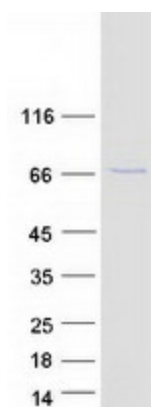
TRTRPLEQKLISEEDLAANDILDYKDDDDKV

Tag: C-Myc/DDK
Predicted MW: 68 kDa
Concentration: >0.05 µg/µL as determined by microplate BCA method
Purity: > 80% as determined by SDS-PAGE and Coomassie blue staining
Buffer: 25 mM Tris-HCl, 100 mM glycine, pH 7.3, 10% glycerol
Preparation: Recombinant protein was captured through anti-DDK affinity column followed by conventional chromatography steps.
Note: For testing in cell culture applications, please filter before use. Note that you may experience some loss of protein during the filtration process.
Storage: Store at -80°C.



[View online »](#)

Stability:	Stable for 12 months from the date of receipt of the product under proper storage and handling conditions. Avoid repeated freeze-thaw cycles.
RefSeq:	<u>NP_060786</u>
Locus ID:	55295
UniProt ID:	<u>Q53HC5, A0A024R7N5</u>
RefSeq Size:	3122
Cytogenetics:	19p13.11
RefSeq ORF:	1845

Product images:

Coomassie blue staining of purified KLHL26 protein (Cat# [TP305222]). The protein was produced from HEK293T cells transfected with KLHL26 cDNA clone (Cat# [RC205222]) using MegaTran 2.0 (Cat# [TT210002]).