

## Product datasheet for **TP305222**

### KLHL26 (NM\_018316) Human Recombinant Protein

#### Product data:

Product Type:	Recombinant Proteins
Description:	Recombinant protein of human kelch-like 26 (Drosophila) (KLHL26), 20 µg
Species:	Human
Expression Host:	HEK293T
Expression cDNA	>RC205222 protein sequence
Clone or AA Sequence:	Red=Cloning site Green=Tags(s)

MAESGGSSGGAGGGGAFGAGPGERPNSTADKNGALKCTFSAPSHSTSLLQGLATLRAQGQLLDVLTIN  
REAFPAHKVLAACSDYFRAMFTGGMREASQDVIELKGV SARGLRHIIDFAYSAEVTLDLDCVQDVLGAA  
VFLQMLPVVELCEEFLKAAMSVETCLNIGQMATTFFSLASLRESVDAFTFRHFLQIAEEEDFLRLPLERLV  
FFLQSNRLQSCAEIDL FRAAVRWLQHDPARRPRASHVLCHIRFPLMQSSELVDSVQTLDIMVEDVLCRQY  
LLEAFNYQVLPFRQHMQSPRTAVRSDVPSLVTFGGTPYTDSDRSVSSKVYQLPEPGARHFRELTEMEVG  
CSHTCVAVLDNFVYVAGGQHLQYRSGEGAVDACRYRDPHLNRWLRLQAMQESRIQFQLNVLCGMVYATGG  
RNRAGSLASVERYCPRRNEWGYACSLKRRTWGHAGAASGGRLYISGGYGISVEDKKALHCYDPVADQWEF  
KAPMSEPRVLHAMVGAGGRIYALGGRMDHVDRCFDVLAVEYYVPETDQWTSMSMPMRAGQSEAGCCLLERK  
IYIVGGYNWRLNNTGIVQVYNTDTEDEWERDLHFPEFAGIACAPVLLPRAGTRR

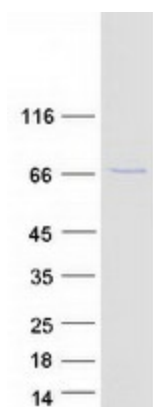
TRTRPLEQKLISEEDLAANDILDYKDDDDKV

Tag:	C-Myc/DDK
Predicted MW:	68 kDa
Concentration:	>0.05 µg/µL as determined by microplate BCA method
Purity:	> 80% as determined by SDS-PAGE and Coomassie blue staining
Buffer:	25 mM Tris-HCl, 100 mM glycine, pH 7.3, 10% glycerol
Preparation:	Recombinant protein was captured through anti-DDK affinity column followed by conventional chromatography steps.
Note:	For testing in cell culture applications, please filter before use. Note that you may experience some loss of protein during the filtration process.
Storage:	Store at -80°C.



[View online »](#)

Stability:	Stable for 12 months from the date of receipt of the product under proper storage and handling conditions. Avoid repeated freeze-thaw cycles.
RefSeq:	<u>NP_060786</u>
Locus ID:	55295
UniProt ID:	<u>Q53HC5, A0A024R7N5</u>
RefSeq Size:	3122
Cytogenetics:	19p13.11
RefSeq ORF:	1845

**Product images:**

Coomassie blue staining of purified KLHL26 protein (Cat# TP305222). The protein was produced from HEK293T cells transfected with KLHL26 cDNA clone (Cat# [RC205222]) using MegaTran 2.0 (Cat# [TT210002]).