

## Product datasheet for **TP305218M**

### TKTL1 (NM\_012253) Human Recombinant Protein

#### Product data:

Product Type:	Recombinant Proteins
Description:	Purified recombinant protein of Homo sapiens transketolase-like 1 (TKTL1), 100 µg
Species:	Human
Expression Host:	HEK293T
Expression cDNA Clone or AA Sequence:	>RC205218 protein sequence <b>Red</b> =Cloning site <b>Green</b> =Tags(s)

MADAEARAEFPPEARPDRTGLQVFQDMASRLRIHSIRATCSTSSGHPTSCSSSSEIMSVLFFYIMRYKQS  
DPENPDNDRFVLAKRLSFVDVATGWLQGLGVACGMAYTGKYFDRASYRVFCLMSDGESSEGSVWEAMAF  
ASYYSLDNLVATFDVNRLGHSGALPAEHCINIYQRRCEAFGWNTYVVDGRDVEALCQVFWQASQVKHKPT  
AVVAKTFKGRGTPSIEDAESWHAKPMPRERADAIKLIQSIRNLDPPPIEDSPEVNITDVRMTSP  
PDYRVGDKIATRACGLALAKLGYANNRWWLDGDTRYSTFSEIFNKEYPERFIECFMAEQNMVSVLALGC  
ASRGRTIAFASTFAAFLTRAFDHIRIGGLAESNINIIGSHCGVSVGDDGASQMALEDIAMFRTIPKCTIF  
YPTDAVSTEHAVALAANAKGMCFIRTRPETMVIYTPQERFEIGQAKVLRHCVSDKVTVIGAGITVYEAL  
AAADELSKQDIFIRVIDLFTIKPLDVATIVSSAKATEGRIITVEDHYPQGGIGEAVCAAVSMDPDIQVHS  
LAVSGVPQSGKSEELLDMYGISARHIIVAVKCMLLN

**TRTRPLEQKLISEEDLAANDILDYKDDDDKV**

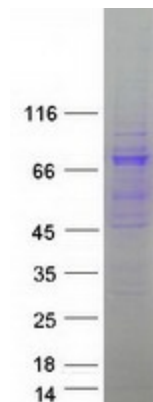
Tag:	C-Myc/DDK
Predicted MW:	65.2 kDa
Concentration:	>0.05 µg/µL as determined by microplate BCA method
Purity:	> 80% as determined by SDS-PAGE and Coomassie blue staining
Buffer:	25 mM Tris-HCl, 100 mM glycine, pH 7.3, 10% glycerol
Preparation:	Recombinant protein was captured through anti-DDK affinity column followed by conventional chromatography steps.
Note:	For testing in cell culture applications, please filter before use. Note that you may experience some loss of protein during the filtration process.
Storage:	Store at -80°C.



[View online »](#)

<b>Stability:</b>	Stable for 12 months from the date of receipt of the product under proper storage and handling conditions. Avoid repeated freeze-thaw cycles.
<b>RefSeq:</b>	<a href="#">NP_036385</a>
<b>Locus ID:</b>	8277
<b>UniProt ID:</b>	<a href="#">P51854</a> , <a href="#">Q5TYJ8</a>
<b>RefSeq Size:</b>	2652
<b>Cytogenetics:</b>	Xq28
<b>RefSeq ORF:</b>	1788
<b>Synonyms:</b>	TKR; TKT2
<b>Summary:</b>	The protein encoded by this gene is a transketolase that acts as a homodimer and catalyzes the conversion of sedoheptulose 7-phosphate and D-glyceraldehyde 3-phosphate to D-ribose 5-phosphate and D-xylulose 5-phosphate. This reaction links the pentose phosphate pathway with the glycolytic pathway. Variations in this gene may be the cause of Wernicke-Korsakoff syndrome. Three transcript variants encoding different isoforms have been found for this gene. [provided by RefSeq, Mar 2011]
<b>Protein Families:</b>	Druggable Genome
<b>Protein Pathways:</b>	Metabolic pathways, Pentose phosphate pathway

### Product images:



Coomassie blue staining of purified TKTL1 protein (Cat# [TP305218]). The protein was produced from HEK293T cells transfected with TKTL1 cDNA clone (Cat# [RC205218]) using MegaTran 2.0 (Cat# [TT210002]).