

Product datasheet for **TP305216M**

HLA-G (HLA-G) (NM_002127) Human Recombinant Protein

Product data:

Product Type:	Recombinant Proteins
Description:	Recombinant protein of human major histocompatibility complex, class I, G (HLA-G), 100 µg
Species:	Human
Expression Host:	HEK293T
Expression cDNA	>RC205216 protein sequence
Clone or AA Sequence:	Red=Cloning site Green=Tags(s)

MVVMAPRTLFLLLSGALTLTETWAGSHSMRYFSAAVSRPSRGEPRFIAMGYVDDTQFVRFDSDSACPRME
PRAPWVEREGPEYWEEETRNTKAHAQTDRMNLQTLRGYNNQSEASSHTLQWMIGCDLGS DGRLLRGYEQY
AYDGKDYALNEDLRSWTAADTAAQISKRKCEANVAEQRRAYLEGTCVEWLHRYLENGKEMQLRADPPK
THVTHHPVFDYEATLRCWALGFYPAEILTWQRDGEDQTQDVELVETKPA GDGTFQKWA AVVWPSGEEQR
YTCHVQHEGLPEPLMLRWKQSSLPTIPIMGIVAGLVVLA AVVTGAAVA AVLWRKKSSD

TRTRPLEQKLISEEDLAANDILDYKDDDDKV

Tag:	C-Myc/DDK
Predicted MW:	38.3 kDa
Concentration:	>0.1 µg/µL as determined by microplate BCA method
Purity:	> 80% as determined by SDS-PAGE and Coomassie blue staining
Buffer:	25 mM Tris-HCl, 100 mM glycine, pH 7.3, 10% glycerol
Bioactivity:	Cell treatment (PMID: 29985558)
Preparation:	Recombinant protein was captured through anti-DDK affinity column followed by conventional chromatography steps.
Note:	For testing in cell culture applications, please filter before use. Note that you may experience some loss of protein during the filtration process.
Storage:	Store at -80°C.
Stability:	Stable for 12 months from the date of receipt of the product under proper storage and handling conditions. Avoid repeated freeze-thaw cycles.
RefSeq:	NP_002118



[View online »](#)

Locus ID: 3135

UniProt ID: [P17693](#), [Q6DU14](#)

RefSeq Size: 1578

Cytogenetics: 6p22.1

RefSeq ORF: 1014

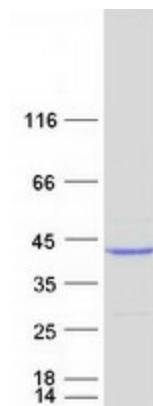
Synonyms: MHC-G

Summary: HLA-G belongs to the HLA class I heavy chain paralogues. This class I molecule is a heterodimer consisting of a heavy chain and a light chain (beta-2 microglobulin). The heavy chain is anchored in the membrane. HLA-G is expressed on fetal derived placental cells. The heavy chain is approximately 45 kDa and its gene contains 8 exons. Exon one encodes the leader peptide, exons 2 and 3 encode the alpha1 and alpha2 domain, which both bind the peptide, exon 4 encodes the alpha3 domain, exon 5 encodes the transmembrane region, and exon 6 encodes the cytoplasmic tail. [provided by RefSeq, Jul 2008]

Protein Families: Transmembrane

Protein Pathways: Allograft rejection, Antigen processing and presentation, Autoimmune thyroid disease, Cell adhesion molecules (CAMs), Endocytosis, Graft-versus-host disease, Natural killer cell mediated cytotoxicity, Type I diabetes mellitus, Viral myocarditis

Product images:



Coomassie blue staining of purified HLA-G protein (Cat# [TP305216]). The protein was produced from HEK293T cells transfected with HLA-G cDNA clone (Cat# [RC205216]) using MegaTran 2.0 (Cat# [TT210002]).