

Product datasheet for TP305215L

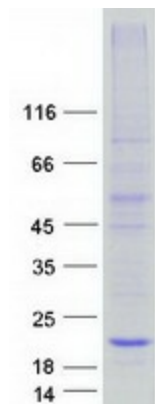
C20orf141 (NM_080739) Human Recombinant Protein

Product data:

Product Type:	Recombinant Proteins
Description:	Recombinant protein of human chromosome 20 open reading frame 141 (C20orf141), 1 mg
Species:	Human
Expression Host:	HEK293T
Expression cDNA Clone or AA Sequence:	>RC205215 protein sequence Red =Cloning site Green =Tags(s) MTRLCLPRPEAREDPIPVPPRGLGAGEGSGSPVRPPVSTWGPSWAQLLDLWLGALGLTIQAVFSTTGP ALLLLLVSFLTFDLLHRPAGHTLPQRKLLTRGQSQGAGEGPGQEQEALLQMGTVSGQLSLQDALLLLMG LGPLLACGMPLTLLGLAFCLHPWA TR TRPLEQKLISEEDLAANDILDYKDDDDKV
Tag:	C-Myc/DDK
Predicted MW:	17.2 kDa
Concentration:	>0.05 µg/µL as determined by microplate BCA method
Purity:	> 80% as determined by SDS-PAGE and Coomassie blue staining
Buffer:	25 mM Tris-HCl, 100 mM glycine, pH 7.3, 10% glycerol
Preparation:	Recombinant protein was captured through anti-DDK affinity column followed by conventional chromatography steps.
Note:	For testing in cell culture applications, please filter before use. Note that you may experience some loss of protein during the filtration process.
Storage:	Store at -80°C.
Stability:	Stable for 12 months from the date of receipt of the product under proper storage and handling conditions. Avoid repeated freeze-thaw cycles.
RefSeq:	NP_542777
Locus ID:	128653
UniProt ID:	Q9NUB4
RefSeq Size:	741


[View online »](#)

Cytogenetics: 20p13
 RefSeq ORF: 495
 Synonyms: dJ860F19.4

Product images:


Coomassie blue staining of purified C20orf141 protein (Cat# [TP305215]). The protein was produced from HEK293T cells transfected with C20orf141 cDNA clone (Cat# [RC205215]) using MegaTran 2.0 (Cat# [TT210002]).