

## Product datasheet for **TP305213M**

### Monocarboxylic acid transporter 1 (SLC16A1) (NM\_003051) Human Recombinant Protein

#### Product data:

**Product Type:** Recombinant Proteins

**Description:** Recombinant protein of human solute carrier family 16, member 1 (monocarboxylic acid transporter 1) (SLC16A1), 100 µg

**Species:** Human

**Expression Host:** HEK293T

**Expression cDNA Clone or AA Sequence:** >RC205213 protein sequence  
**Red**=Cloning site **Green**=Tags(s)

MPPAVGGPVGYPDGGWGWAVVIGAFISIGFSYAFPKSITVFFKEIEGIFHATTSEVSWISSIMLAVMY  
GGGPISSILVNKYGSRIVMIVGGCLSGCLIAASFCNTVQQLYVCIGVIGGLGLAFNLNPALTMIGKYFY  
KRRPLANGLAMAGSPVFLCTLAPLNQVFFGIFGWRGSFLILGGLLNCCVAGALMRPIGPKPTKAGKDKS  
KASLEKAGKSGVKKDLHDANTDLIGRHPKQEKRSVFQTINQFLDLTLFTHRGLLYLSGNVIMFFGLFAP  
LVFLSSYGKSQHYSSEKSAFLLSILAFVDMVARPSMGLVANTKPIRPRIQYFFAASVWANGVCHMLAPLS  
TTYVGFVYAGFFGFAFGWLSSVLFETLMDLVGPQRFS SAVGLVTIVECCPVLLGPPLLGRNLNDMYGDYK  
YTYWACGVLLIISGIYLFIGMGINYRLLAKEQKANEQKESKEEETSIDVAGKPNEVTKAAESPDQKDTD  
GGPKEESPV

**TRTRPLEQKLISEEDLAANDILDYKDDDDKV**

**Tag:** C-Myc/DDK

**Predicted MW:** 53.8 kDa

**Concentration:** >0.05 µg/µL as determined by microplate BCA method

**Purity:** > 80% as determined by SDS-PAGE and Coomassie blue staining

**Buffer:** 25 mM Tris-HCl, 100 mM glycine, pH 7.3, 10% glycerol

**Preparation:** Recombinant protein was captured through anti-DDK affinity column followed by conventional chromatography steps.

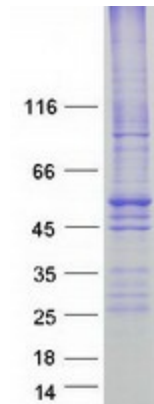
**Note:** For testing in cell culture applications, please filter before use. Note that you may experience some loss of protein during the filtration process.

**Storage:** Store at -80°C.



[View online »](#)

<b>Stability:</b>	Stable for 12 months from the date of receipt of the product under proper storage and handling conditions. Avoid repeated freeze-thaw cycles.
<b>RefSeq:</b>	<a href="#">NP_003042</a>
<b>Locus ID:</b>	6566
<b>UniProt ID:</b>	<a href="#">P53985</a> , <a href="#">A0A024R0H1</a>
<b>RefSeq Size:</b>	3927
<b>Cytogenetics:</b>	1p13.2
<b>RefSeq ORF:</b>	1500
<b>Synonyms:</b>	HHF7; MCT; MCT1; MCT1D
<b>Summary:</b>	The protein encoded by this gene is a proton-linked monocarboxylate transporter that catalyzes the movement of many monocarboxylates, such as lactate and pyruvate, across the plasma membrane. Mutations in this gene are associated with erythrocyte lactate transporter defect. Alternatively spliced transcript variants have been found for this gene.[provided by RefSeq, Oct 2009]
<b>Protein Families:</b>	Transmembrane

**Product images:**

Coomassie blue staining of purified SLC16A1 protein (Cat# [TP305213]). The protein was produced from HEK293T cells transfected with SLC16A1 cDNA clone (Cat# [RC205213]) using MegaTran 2.0 (Cat# [TT210002]).