

Product datasheet for **TP305213L**

Monocarboxylic acid transporter 1 (SLC16A1) (NM_003051) Human Recombinant Protein

Product data:

Product Type: Recombinant Proteins

Description: Recombinant protein of human solute carrier family 16, member 1 (monocarboxylic acid transporter 1) (SLC16A1), 1 mg

Species: Human

Expression Host: HEK293T

Expression cDNA Clone or AA Sequence: >RC205213 protein sequence
Red=Cloning site **Green**=Tags(s)

MPPAVGGPVGYPDGGWGWAVVIGAFISIGFSYAFPKSITVFFKEIEGIFHATTSEVSWISSIMLAVMY
GGGPISSILVNKYGSRIVMIVGGCLSGCLIAASFCNTVQQLYVCIGVIGGLGLAFNLPALTMIGKYFY
KRRPLANGLAMAGSPVFLCTLAPLNQVFFGIFGWRGSFLILGGLLNCCVAGALMRPIGPKPTKAGKDKS
KASLEKAGKSGVKKDLHDANTDLIGRHPKQEKRSVFQTINQFLDLTLFTHRGLLYLSGNVIMFFGLFAP
LVFLSSYGKSQLHYSSEKSAFLLSILAFVDMVARPSMGLVANTKPIRPRIQYFFAASVWANGVCHMLAPLS
TTYVGFVYAGFFGFAFGWLSSVLFETLMDLVGPQRFS SAVGLVTIVECCPVLLGPPLLGRNLNDMYGDYK
YTYWACGVLLIISGIYLFIGMGINYRLLAKEQKANEQKESKEEETSIDVAGKPNEVTKAAESPDQKDTD
GGPKEEESPV

TRTRPLEQKLISEEDLAANDILDYKDDDDKV

Tag: C-Myc/DDK

Predicted MW: 53.8 kDa

Concentration: >0.05 µg/µL as determined by microplate BCA method

Purity: > 80% as determined by SDS-PAGE and Coomassie blue staining

Buffer: 25 mM Tris-HCl, 100 mM glycine, pH 7.3, 10% glycerol

Preparation: Recombinant protein was captured through anti-DDK affinity column followed by conventional chromatography steps.

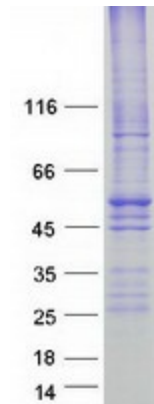
Note: For testing in cell culture applications, please filter before use. Note that you may experience some loss of protein during the filtration process.

Storage: Store at -80°C.



[View online »](#)

Stability:	Stable for 12 months from the date of receipt of the product under proper storage and handling conditions. Avoid repeated freeze-thaw cycles.
RefSeq:	NP_003042
Locus ID:	6566
UniProt ID:	P53985 , A0A024R0H1
RefSeq Size:	3927
Cytogenetics:	1p13.2
RefSeq ORF:	1500
Synonyms:	HHF7; MCT; MCT1; MCT1D
Summary:	The protein encoded by this gene is a proton-linked monocarboxylate transporter that catalyzes the movement of many monocarboxylates, such as lactate and pyruvate, across the plasma membrane. Mutations in this gene are associated with erythrocyte lactate transporter defect. Alternatively spliced transcript variants have been found for this gene.[provided by RefSeq, Oct 2009]
Protein Families:	Transmembrane

Product images:

Coomassie blue staining of purified SLC16A1 protein (Cat# [TP305213]). The protein was produced from HEK293T cells transfected with SLC16A1 cDNA clone (Cat# [RC205213]) using MegaTran 2.0 (Cat# [TT210002]).