

Product datasheet for **TP305181M**

GPR85 (NM_018970) Human Recombinant Protein

Product data:

| | |
|-----------------------|--|
| Product Type: | Recombinant Proteins |
| Description: | Recombinant protein of human G protein-coupled receptor 85 (GPR85), 100 µg |
| Species: | Human |
| Expression Host: | HEK293T |
| Expression cDNA | >RC205181 protein sequence |
| Clone or AA Sequence: | Red=Cloning site Green=Tags(s) |

MANYSHAADNILQNLSPFLTAFLKLTSLGFIIGVSVVGNLLISILLVKDKTLHRAPYYFLLDLCCSDILRS
AICFPFVFNFSVKNSTWYGTLTCKVIAFLGVLSCFHTAFMLFCISVTRYLAIAHHRFYTKRLTFWTCLA
VICMVWTLVAMAFPPVLDVGTYSFIREEDQCAFQHRFRANDSLGFMLLLALILLATQLVYLKLIFFVH
DRRKMKPVQFVAAVSQNWTFHGPASGQAAANWLAGFGRGPTPTLLGIRQNANTTGRRRLVLDLDEFKME
KRISRMFYIMTFLFLTLWGPYLVACYWRVVFARGPVVPGGFLTAAVWMSFAQAGINPFVCIFSNRELRRCF
STLLLYCRKSRLPREPYCVI

TRTRPLEQKLISEEDLAANDILDYKDDDDKV

| | |
|----------------|--|
| Tag: | C-Myc/DDK |
| Predicted MW: | 41.8 kDa |
| Concentration: | >0.05 µg/µL as determined by microplate BCA method |
| Purity: | > 80% as determined by SDS-PAGE and Coomassie blue staining |
| Buffer: | 25 mM Tris-HCl, 100 mM glycine, pH 7.3, 10% glycerol |
| Preparation: | Recombinant protein was captured through anti-DDK affinity column followed by conventional chromatography steps. |
| Note: | For testing in cell culture applications, please filter before use. Note that you may experience some loss of protein during the filtration process. |
| Storage: | Store at -80°C. |
| Stability: | Stable for 12 months from the date of receipt of the product under proper storage and handling conditions. Avoid repeated freeze-thaw cycles. |
| RefSeq: | NP_061843 |
| Locus ID: | 54329 |



[View online »](#)

UniProt ID: [P60893](#), [A4D0T8](#), [Q8NEN2](#)

RefSeq Size: 4948

Cytogenetics: 7q31.1

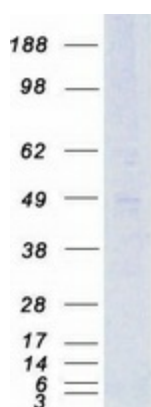
RefSeq ORF: 1110

Synonyms: SREB; SREB2

Summary: Members of the G protein-coupled receptor (GPCR) family, such as GPR85, have a similar structure characterized by 7 transmembrane domains. Activation of GPCRs by extracellular stimuli, such as neurotransmitters, hormones, or light, induces an intracellular signaling cascade mediated by heterotrimeric GTP-binding proteins, or G proteins (Matsumoto et al., 2000 [PubMed 10833454]).[supplied by OMIM, Aug 2008]

Protein Families: Druggable Genome, GPCR, Transmembrane

Product images:



Coomassie blue staining of purified GPR85 protein (Cat# [TP305181]). The protein was produced from HEK293T cells transfected with GPR85 cDNA clone (Cat# [RC205181]) using MegaTran 2.0 (Cat# [TT210002]).