

Product datasheet for **TP305181**

GPR85 (NM_018970) Human Recombinant Protein

Product data:

Product Type: Recombinant Proteins
Description: Recombinant protein of human G protein-coupled receptor 85 (GPR85), 20 µg
Species: Human
Expression Host: HEK293T
Expression cDNA >RC205181 protein sequence
Clone or AA Sequence: **Red**=Cloning site **Green**=Tags(s)

MANYSHAADNILQNLSPFLTAFLKLTSLGFIIGVSVVGNLLISILLVKDKTLHRAPYYFLLDLCCSDILRS
AICFPFVFNFSVKNSTWYGTLTCKVIAFLGVLSCFHTAFMLFCISVTRYLAIAHHRFYTKRLTFWTCLA
VICMVWTLVAMAFPPVLDVGTYSFIREEDQCAFQHRFRANDSLGFMLLLALILLATQLVYLKLIFFVH
DRRKMKPVQFVAASQNWTFHGPASGQAAANWLAGFGRGPTPTLLGIRQNANTTGRRRLVLDEFKME
KRISRMFYIMTFLFLTLWGPYLVACYWRVVFARGPVVPGGFLTAAVWMSFAQAGINPFVCIFSNRELRRCF
STLLLYCRKSRLPREPYCVI

TRTRPLEQKLISEEDLAANDILDYKDDDDKV

Tag: C-Myc/DDK
Predicted MW: 41.8 kDa
Concentration: >0.05 µg/µL as determined by microplate BCA method
Purity: > 80% as determined by SDS-PAGE and Coomassie blue staining
Buffer: 25 mM Tris-HCl, 100 mM glycine, pH 7.3, 10% glycerol
Preparation: Recombinant protein was captured through anti-DDK affinity column followed by conventional chromatography steps.
Note: For testing in cell culture applications, please filter before use. Note that you may experience some loss of protein during the filtration process.
Storage: Store at -80°C.
Stability: Stable for 12 months from the date of receipt of the product under proper storage and handling conditions. Avoid repeated freeze-thaw cycles.
RefSeq: [NP_061843](#)
Locus ID: 54329



[View online »](#)

UniProt ID: [P60893](#), [A4D0T8](#), [Q8NEN2](#)

RefSeq Size: 4948

Cytogenetics: 7q31.1

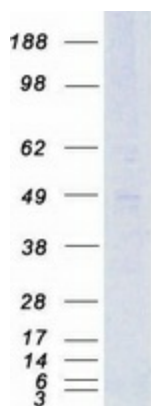
RefSeq ORF: 1110

Synonyms: SREB; SREB2

Summary: Members of the G protein-coupled receptor (GPCR) family, such as GPR85, have a similar structure characterized by 7 transmembrane domains. Activation of GPCRs by extracellular stimuli, such as neurotransmitters, hormones, or light, induces an intracellular signaling cascade mediated by heterotrimeric GTP-binding proteins, or G proteins (Matsumoto et al., 2000 [PubMed 10833454]).[supplied by OMIM, Aug 2008]

Protein Families: Druggable Genome, GPCR, Transmembrane

Product images:



Coomassie blue staining of purified GPR85 protein (Cat# TP305181). The protein was produced from HEK293T cells transfected with GPR85 cDNA clone (Cat# [RC205181]) using MegaTran 2.0 (Cat# [TT210002]).