

Product datasheet for **TP305172M**

CPLX3 (NM_001030005) Human Recombinant Protein

Product data:

Product Type:	Recombinant Proteins
Description:	Recombinant protein of human complexin 3 (CPLX3), 100 µg
Species:	Human
Expression Host:	HEK293T
Expression cDNA Clone or AA Sequence:	>RC205172 protein sequence Red =Cloning site Green =Tags(s)
	MAFMVKTMTVGGQLKNLTGSLGGGEDKGDGDKSAAEAQGMSREEEYQKQLVEEKMERDAQFTQRKAERA TLRSHFRDKYRLPKNETDESQIQMAGGDVELPRELAKMIEEDTEEEEEKASVLGQLASLPGLNLGSLKDK AQATLGDLKQSAEKCHVM
	TRTRPLEQKLISEEDLAANDILDYKDDDDKV
Tag:	C-Myc/DDK
Predicted MW:	17.4 kDa
Concentration:	>0.05 µg/µL as determined by microplate BCA method
Purity:	> 80% as determined by SDS-PAGE and Coomassie blue staining
Buffer:	25 mM Tris-HCl, 100 mM glycine, pH 7.3, 10% glycerol
Preparation:	Recombinant protein was captured through anti-DDK affinity column followed by conventional chromatography steps.
Note:	For testing in cell culture applications, please filter before use. Note that you may experience some loss of protein during the filtration process.
Storage:	Store at -80°C.
Stability:	Stable for 12 months from the date of receipt of the product under proper storage and handling conditions. Avoid repeated freeze-thaw cycles.
RefSeq:	NP_001025176
Locus ID:	594855
UniProt ID:	Q8WVH0
RefSeq Size:	2012



[View online »](#)

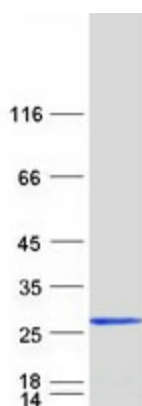
Cytogenetics: 15q24.1

RefSeq ORF: 474

Synonyms: CPX-III; CPXIII; Nbla11589

Summary: Complexin that regulates SNARE protein complex-mediated synaptic vesicle fusion (By similarity). Required for the maintenance of synaptic ultrastructure in the adult retina (By similarity). Positively regulates synaptic transmission through synaptic vesicle availability and exocytosis of neurotransmitters at photoreceptor ribbon synapses in the retina (By similarity). Suppresses tonic photoreceptor activity and baseline 'noise' by suppression of Ca(2+) vesicle tonic release and the facilitation of evoked synchronous and asynchronous Ca(2+) vesicle release (By similarity). [UniProtKB/Swiss-Prot Function]

Product images:



Coomassie blue staining of purified CPLX3 protein (Cat# [TP305172]). The protein was produced from HEK293T cells transfected with CPLX3 cDNA clone (Cat# [RC205172]) using MegaTran 2.0 (Cat# [TT210002]).