

Product datasheet for **TP305150**

MRPL34 (NM_023937) Human Recombinant Protein

Product data:

Product Type:	Recombinant Proteins
Description:	Recombinant protein of human mitochondrial ribosomal protein L34 (MRPL34), nuclear gene encoding mitochondrial protein, 20 µg
Species:	Human
Expression Host:	HEK293T
Expression cDNA Clone or AA Sequence:	>RC205150 protein sequence Red =Cloning site Green =Tags(s)
	MAVLGSLGPTSRSAALLGGRWLQPRAWLGFPDAWGLPTPQQARGKARGNEYQPSNIKRKNKHGWVRRLLSTPAGVQVILRRMLKGRKLSH
	TRTRPLEQKLISEEDLAANDILDYKDDDDKV
Tag:	C-Myc/DDK
Predicted MW:	10 kDa
Concentration:	>0.05 µg/µL as determined by microplate BCA method
Purity:	> 80% as determined by SDS-PAGE and Coomassie blue staining
Buffer:	25 mM Tris-HCl, 100 mM glycine, pH 7.3, 10% glycerol
Preparation:	Recombinant protein was captured through anti-DDK affinity column followed by conventional chromatography steps.
Note:	For testing in cell culture applications, please filter before use. Note that you may experience some loss of protein during the filtration process.
Storage:	Store at -80°C.
Stability:	Stable for 12 months from the date of receipt of the product under proper storage and handling conditions. Avoid repeated freeze-thaw cycles.
RefSeq:	NP_076426
Locus ID:	64981
UniProt ID:	Q9BQ48 , A0A024R7J4
RefSeq Size:	968



[View online »](#)

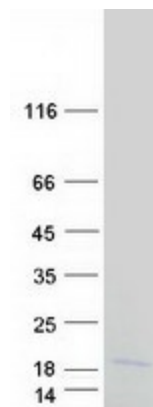
Cytogenetics: 19p13.11

RefSeq ORF: 276

Synonyms: L34mt

Summary: Mammalian mitochondrial ribosomal proteins are encoded by nuclear genes and help in protein synthesis within the mitochondrion. Mitochondrial ribosomes (mitoribosomes) consist of a small 28S subunit and a large 39S subunit. They have an estimated 75% protein to rRNA composition compared to prokaryotic ribosomes, where this ratio is reversed. Another difference between mammalian mitoribosomes and prokaryotic ribosomes is that the latter contain a 5S rRNA. Among different species, the proteins comprising the mitoribosome differ greatly in sequence, and sometimes in biochemical properties, which prevents easy recognition by sequence homology. This gene encodes a 39S subunit protein. [provided by RefSeq, Jul 2008]

Product images:



Coomassie blue staining of purified MRPL34 protein (Cat# TP305150). The protein was produced from HEK293T cells transfected with MRPL34 cDNA clone (Cat# [RC205150]) using MegaTran 2.0 (Cat# [TT210002]).