

Product datasheet for TP305137

ERLIN1 (NM_006459) Human Recombinant Protein

Product data:

| | |
|---------------------------------------|--|
| Product Type: | Recombinant Proteins |
| Description: | Recombinant protein of human ER lipid raft associated 1 (ERLIN1), 20 µg |
| Species: | Human |
| Expression Host: | HEK293T |
| Expression cDNA Clone or AA Sequence: | >RC205137 protein sequence Red =Cloning site Green =Tags(s) |
| | MTQARVLVAAVVGLVAVLLYASIHKIEEGHLAVYYRGGALLTSPSPGPGYHIMLPFITFRSVQTTLQTDE VKNVPCGTSGGVMIIYDRIEVNMLAPYAVFDIVRNYTADYDKTLIFNKHHELNQFCSAHTLQEVYIEL FDQIDENLKQALQKDLNLMAPGLTIQAVRVTKPKIPEAIRRFELMEEKTKLLIAAQKQKVVEKEAETE RKKAVIEAEKIAQVAKIRFQQKVMKETEKRSEIEDAAFLAREKAKADA EYAAHKYATSNKHKLTPEY LELKKYQAIASNSKIYFGSNIPNMFVDSSCALKYSDIRTGRESSLPSKEALEPSGENVIQNKESTG TRTRPLEQKLISEEDLAANDILDYKDDDDKV |
| Tag: | C-Myc/DDK |
| Predicted MW: | 39 kDa |
| Concentration: | >0.05 µg/µL as determined by microplate BCA method |
| Purity: | > 80% as determined by SDS-PAGE and Coomassie blue staining |
| Buffer: | 25 mM Tris-HCl, 100 mM glycine, pH 7.3, 10% glycerol |
| Preparation: | Recombinant protein was captured through anti-DDK affinity column followed by conventional chromatography steps. |
| Note: | For testing in cell culture applications, please filter before use. Note that you may experience some loss of protein during the filtration process. |
| Storage: | Store at -80°C. |
| Stability: | Stable for 12 months from the date of receipt of the product under proper storage and handling conditions. Avoid repeated freeze-thaw cycles. |
| RefSeq: | <u>NP_006450</u> |
| Locus ID: | 10613 |



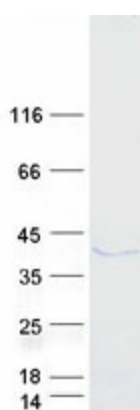
[View online »](#)

UniProt ID: [O75477](#)
RefSeq Size: 3450
Cytogenetics: 10q24.31
RefSeq ORF: 1038
Synonyms: C10orf69; Erlin-1; KE04; KEO4; SPFH1; SPG62

Summary: The protein encoded by this gene is part of a protein complex that mediates degradation of inositol 1,4,5-trisphosphate receptors in the endoplasmic reticulum. The encoded protein also binds cholesterol and regulates the SREBP signaling pathway, which promotes cellular cholesterol homeostasis. Defects in this gene have been associated with spastic paraplegia 62. [provided by RefSeq, Dec 2016]

Protein Families: Transmembrane

Product images:



Coomassie blue staining of purified ERLIN1 protein (Cat# TP305137). The protein was produced from HEK293T cells transfected with ERLIN1 cDNA clone (Cat# [RC205137]) using MegaTran 2.0 (Cat# [TT210002]).