

Product datasheet for **TP305121M**

SOX8 (NM_014587) Human Recombinant Protein

Product data:

Product Type:	Recombinant Proteins
Description:	Recombinant protein of human SRY (sex determining region Y)-box 8 (SOX8), 100 µg
Species:	Human
Expression Host:	HEK293T
Expression cDNA Clone or AA Sequence:	>RC205121 protein sequence Red =Cloning site Green =Tags(s)
	MLDMSEARSQPPCSPSGTASSMSHVEDSDSDAPPSPAGSEGLGRAGVAVGGARGDPAEAADERFPACIRD AVSQVLKGYDWSLVPMPVRRGGGGGALKAKPHVKRPMNAFMVWAQAARRKLADQYPHLHNAELSKTLGKLW RLLSESEKRPFVEEAERLRVQHKKDHPDYKYQPRRRKSAKAGHSDSDSGAELGPHPGGGAVYKAEAGLGD GHHHGDHTGQTHGPPTPPTPKTELQAGAKPELKLEGRRPVDSGRQNIDFSNVDISELSSEVMGTMDAF DVHEFDQYLPLGGPAPPEPGQAYGGAYFHAGASPVWAHKSAPSASASPTETGPPRPHIKTEQPSPGHYGD QPRGSPDYGSCSGQSSATPAAPAGPFAGSQGDYGDLQASSYYGAYPGYAPGLYQYPCFHSPRRPYASPLL NGLALPPAHSPTSHWDQPVYTTLTRP
	TRTRPLEQKLISEEDLAANDILDYKDDDDKV
Tag:	C-Myc/DDK
Predicted MW:	47.1 kDa
Concentration:	>0.05 µg/µL as determined by microplate BCA method
Purity:	> 80% as determined by SDS-PAGE and Coomassie blue staining
Buffer:	25 mM Tris-HCl, 100 mM glycine, pH 7.3, 10% glycerol
Preparation:	Recombinant protein was captured through anti-DDK affinity column followed by conventional chromatography steps.
Note:	For testing in cell culture applications, please filter before use. Note that you may experience some loss of protein during the filtration process.
Storage:	Store at -80°C.
Stability:	Stable for 12 months from the date of receipt of the product under proper storage and handling conditions. Avoid repeated freeze-thaw cycles.
RefSeq:	<u>NP_055402</u>



[View online »](#)

Locus ID: 30812

UniProt ID: [P57073](#)

RefSeq Size: 3049

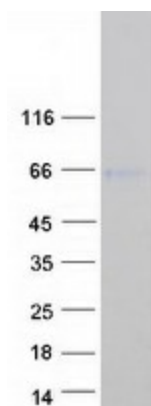
Cytogenetics: 16p13.3

RefSeq ORF: 1338

Summary: This gene encodes a member of the SOX (SRY-related HMG-box) family of transcription factors involved in the regulation of embryonic development and in the determination of the cell fate. The encoded protein may act as a transcriptional activator after forming a protein complex with other proteins. This protein may be involved in brain development and function. Haploinsufficiency for this protein may contribute to the cognitive disability found in an alpha-thalassemia-related syndrome (ART-16). This protein is also highly expressed in the majority of human hepatocellular carcinomas and promotes cellular proliferation and enhanced tumor growth. [provided by RefSeq, Jul 2017]

Protein Families: Transcription Factors

Product images:



Coomassie blue staining of purified SOX8 protein (Cat# [TP305121]). The protein was produced from HEK293T cells transfected with SOX8 cDNA clone (Cat# [RC205121]) using MegaTran 2.0 (Cat# [TT210002]).