

## Product datasheet for **TP305118L**

### Osteopontin (SPP1) (NM\_000582) Human Recombinant Protein

#### Product data:

Product Type:	Recombinant Proteins
Description:	Purified recombinant protein of Homo sapiens secreted phosphoprotein 1 (SPP1), transcript variant 2, 1 mg
Species:	Human
Expression Host:	HEK293T
Expression cDNA Clone or AA Sequence:	>RC205118 protein sequence <b>Red</b> =Cloning site <b>Green</b> =Tags(s)
	<p>MRIAVICFLLGITCAIPVKQADSGSSEEKQLYNKYPDAVATWLNPDPSQKQNLAPQTLPSKSNESH MDDMDEDDDDHVDSQDSIDSNDSDDVDDTDDSHQSDSHHSDEDELVTDFPTDLPADEVFTPVPTVD TYDGRGDSVVYGLRSKSKKFRPDIQYPDATDEEDITSHMESEELNGAYKAIPVAQDLNAPSDWDSRGKDS YETSQLDDQSAETHSHKQSRLYKRKANDESNEHSDVIDSQELSKVSREFHSHEFHSHEDMLVDPKSKEE DKHLKFRISHELDSASSEVN</p> <p><b>TRTRPLEQKLISEEDLAANDILDYKDDDDKV</b></p>
Tag:	C-Myc/DDK
Predicted MW:	32.1 kDa
Concentration:	>0.05 µg/µL as determined by microplate BCA method
Purity:	> 80% as determined by SDS-PAGE and Coomassie blue staining
Buffer:	25 mM Tris-HCl, 100 mM glycine, pH 7.3, 10% glycerol
Bioactivity:	Cell treatment (PMID: <a href="#">29959420</a> )
Preparation:	Recombinant protein was captured through anti-DDK affinity column followed by conventional chromatography steps.
Note:	For testing in cell culture applications, please filter before use. Note that you may experience some loss of protein during the filtration process.
Storage:	Store at -80°C.
Stability:	Stable for 12 months from the date of receipt of the product under proper storage and handling conditions. Avoid repeated freeze-thaw cycles.
RefSeq:	<a href="#">NP_000573</a>



[View online »](#)

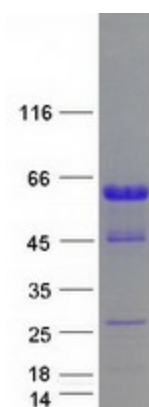
Locus ID:	6696
UniProt ID:	<a href="#">P10451</a> , <a href="#">A0A024RDE6</a>
RefSeq Size:	1616
Cytogenetics:	4q22.1
RefSeq ORF:	900
Synonyms:	BNSP; BSPI; ETA-1; OPN

**Summary:** The protein encoded by this gene is involved in the attachment of osteoclasts to the mineralized bone matrix. The encoded protein is secreted and binds hydroxyapatite with high affinity. The osteoclast vitronectin receptor is found in the cell membrane and may be involved in the binding to this protein. This protein is also a cytokine that upregulates expression of interferon-gamma and interleukin-12. Several transcript variants encoding different isoforms have been found for this gene. [provided by RefSeq, Oct 2011]

**Protein Families:** Druggable Genome, Secreted Protein

**Protein Pathways:** ECM-receptor interaction, Focal adhesion, Toll-like receptor signaling pathway

### Product images:



Coomassie blue staining of purified SPP1 protein (Cat# [TP305118]). The protein was produced from HEK293T cells transfected with SPP1 cDNA clone (Cat# [RC205118]) using MegaTran 2.0 (Cat# [TT210002]).