

Product datasheet for TP305113

SNRPG (NM_003096) Human Recombinant Protein

Product data:

Product Type:	Recombinant Proteins
Description:	Recombinant protein of human small nuclear ribonucleoprotein polypeptide G (SNRPG), 20 µg
Species:	Human
Expression Host:	HEK293T
Expression cDNA Clone or AA Sequence:	>RC205113 protein sequence Red =Cloning site Green =Tags(s) MSKAHPPELKKFMDKKLSLKLNGGRHVQGILRGFDPFMNLVIDECVEMATSGQQNNIGMVIRGNSIIML EALERV TR TRPLEQKLISEEDLAANDILDYKDDDDKV
Tag:	C-Myc/DDK
Predicted MW:	8.3 kDa
Concentration:	>0.05 µg/µL as determined by microplate BCA method
Purity:	> 80% as determined by SDS-PAGE and Coomassie blue staining
Buffer:	25 mM Tris-HCl, 100 mM glycine, pH 7.3, 10% glycerol
Preparation:	Recombinant protein was captured through anti-DDK affinity column followed by conventional chromatography steps.
Note:	For testing in cell culture applications, please filter before use. Note that you may experience some loss of protein during the filtration process.
Storage:	Store at -80°C.
Stability:	Stable for 12 months from the date of receipt of the product under proper storage and handling conditions. Avoid repeated freeze-thaw cycles.
RefSeq:	NP_003087
Locus ID:	6637
UniProt ID:	P62308
RefSeq Size:	606
Cytogenetics:	2p13.3


[View online »](#)

RefSeq ORF: 228

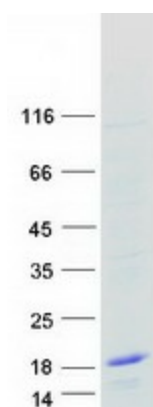
Synonyms: Sm-G; SMG

Summary: The protein encoded by this gene is a component of the U1, U2, U4, and U5 small nuclear ribonucleoprotein complexes, precursors of the spliceosome. The encoded protein may also be a part of the U7 small nuclear ribonucleoprotein complex, which participates in the processing of the 3' end of histone transcripts. Several transcript variants encoding different isoforms have been found for this gene. [provided by RefSeq, Nov 2015]

Protein Families: Druggable Genome

Protein Pathways: Spliceosome

Product images:



Coomassie blue staining of purified SNRPG protein (Cat# TP305113). The protein was produced from HEK293T cells transfected with SNRPG cDNA clone (Cat# [RC205113]) using MegaTran 2.0 (Cat# [TT210002]).