

Product datasheet for TP305106L

MIF (NM_002415) Human Recombinant Protein

Product data:

Product Type:	Recombinant Proteins
Description:	Recombinant protein of human macrophage migration inhibitory factor (glycosylation-inhibiting factor) (MIF), 1 mg
Species:	Human
Expression Host:	HEK293T
Expression cDNA Clone or AA Sequence:	>RC205106 protein sequence Red=Cloning site Green=Tags(s)
	MPMFIVNTNVPRASVPDGFSELTTQQLAQTGKPPQYIAVHVVPDQLMAFGGSSEPCALCSLH SIGKIGG AQNRSYSKLLCGLLAERLRISPDRVYINYYDMNAANVGWNNSTFA
	TRTRPLEQKLISEEDLAANDILDYKDDDDKV
Tag:	C-Myc/DDK
Predicted MW:	12.3 kDa
Concentration:	>0.05 µg/µL as determined by microplate BCA method
Purity:	> 80% as determined by SDS-PAGE and Coomassie blue staining
Buffer:	25 mM Tris-HCl, 100 mM glycine, pH 7.3, 10% glycerol
Preparation:	Recombinant protein was captured through anti-DDK affinity column followed by conventional chromatography steps.
Note:	For testing in cell culture applications, please filter before use. Note that you may experience some loss of protein during the filtration process.
Storage:	Store at -80°C.
Stability:	Stable for 12 months from the date of receipt of the product under proper storage and handling conditions. Avoid repeated freeze-thaw cycles.
RefSeq:	NP_002406
Locus ID:	4282
UniProt ID:	P14174 , I4AY87
RefSeq Size:	561



[View online »](#)

Cytogenetics: 22q11.23

RefSeq ORF: 345

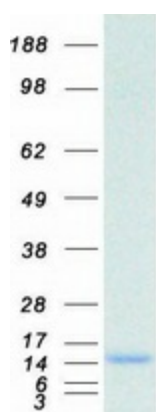
Synonyms: GIF; GLIF; MMIF

Summary: This gene encodes a lymphokine involved in cell-mediated immunity, immunoregulation, and inflammation. It plays a role in the regulation of macrophage function in host defense through the suppression of anti-inflammatory effects of glucocorticoids. This lymphokine and the JAB1 protein form a complex in the cytosol near the peripheral plasma membrane, which may indicate an additional role in integrin signaling pathways. [provided by RefSeq, Jul 2008]

Protein Families: Druggable Genome

Protein Pathways: Phenylalanine metabolism, Tyrosine metabolism

Product images:



Coomassie blue staining of purified MIF protein (Cat# [TP305106]). The protein was produced from HEK293T cells transfected with MIF cDNA clone (Cat# [RC205106]) using MegaTran 2.0 (Cat# [TT210002]).