

## Product datasheet for **TP305104**

### **C1orf150 (GCSAML) (NM\_145278) Human Recombinant Protein**

#### Product data:

**Product Type:** Recombinant Proteins

**Description:** Recombinant protein of human chromosome 1 open reading frame 150 (C1orf150), 20 µg

**Species:** Human

**Expression Host:** HEK293T

**Expression cDNA Clone  
or AA Sequence:** >RC205104 protein sequence  
**Red**=Cloning site **Green**=Tags(s)

MGNVLLRKLKSLCLGENQKKPKKGNPDEERKRQEMTTFERKLQDQDKKSQEVSSSTSNQENENGSGSEEVCYT  
VINHIPHQRSSLSNDDGYENIDSLTRKVRQFRERSETHEYALLRTSVSRPCSCTHEHDYEVVFPH

**TRTRPLEQKLISEEDLAANDILDYKDDDDKV**

**Tag:** C-Myc/DDK

**Predicted MW:** 15.5 kDa

**Concentration:** >0.05 µg/µL as determined by microplate BCA method

**Purity:** > 80% as determined by SDS-PAGE and Coomassie blue staining

**Buffer:** 25 mM Tris-HCl, 100 mM glycine, pH 7.3, 10% glycerol

**Preparation:** Recombinant protein was captured through anti-DDK affinity column followed by conventional chromatography steps.

**Note:** For testing in cell culture applications, please filter before use. Note that you may experience some loss of protein during the filtration process.

**Storage:** Store at -80°C.

**Stability:** Stable for 12 months from the date of receipt of the product under proper storage and handling conditions. Avoid repeated freeze-thaw cycles.

**RefSeq:** [NP\\_660321](#)

**Locus ID:** 148823

**UniProt ID:** [Q5IQS6](#), [Q6ZVI8](#)

**RefSeq Size:** 3863

**Cytogenetics:** 1q44



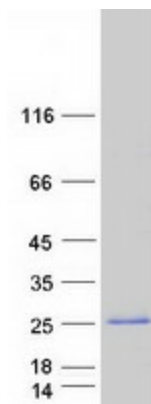
[View online »](#)

RefSeq ORF: 405

Synonyms: C1orf150

Summary: This gene encodes a protein thought to be a signaling molecule associated with germinal centers, the sites of proliferation and differentiation of mature B lymphocytes. Alternate splicing results in multiple transcript variants. [provided by RefSeq, Aug 2013]

### Product images:



Coomassie blue staining of purified GCSAML protein (Cat# TP305104). The protein was produced from HEK293T cells transfected with GCSAML cDNA clone (Cat# [RC205104]) using MegaTran 2.0 (Cat# [TT210002]).