

## Product datasheet for **TP305085L**

### COMMD8 (NM\_017845) Human Recombinant Protein

#### Product data:

Product Type:	Recombinant Proteins
Description:	Recombinant protein of human COMM domain containing 8 (COMMD8), 1 mg
Species:	Human
Expression Host:	HEK293T
Expression cDNA Clone or AA Sequence:	>RC205085 protein sequence <span style="color: red;">Red</span> =Cloning site <span style="color: green;">Green</span> =Tags(s)  MEPEEGTPLWRLQKLPAELGPQLLHKIIDGICGRAYPVYQDYHTVWESEEWVHVLEDIKFFKAIVGKNL PDEEIFQQLNQLNSLHQETIMKCVKSRKDEIKQALSREIVAISSAQLQDFDWQVKLALSSDKIAALRMPL LSLHLDVKENGVEVKPYSIEMSREELQNLIQSLEAANKVVLQLK  <span style="color: red;">TR</span> <span style="color: green;">TRPLEQKLISEEDLAANDILDYKDDDDKV</span>
Tag:	C-Myc/DDK
Predicted MW:	20.9 kDa
Concentration:	>0.05 µg/µL as determined by microplate BCA method
Purity:	> 80% as determined by SDS-PAGE and Coomassie blue staining
Buffer:	25 mM Tris-HCl, 100 mM glycine, pH 7.3, 10% glycerol
Preparation:	Recombinant protein was captured through anti-DDK affinity column followed by conventional chromatography steps.
Note:	For testing in cell culture applications, please filter before use. Note that you may experience some loss of protein during the filtration process.
Storage:	Store at -80°C.
Stability:	Stable for 12 months from the date of receipt of the product under proper storage and handling conditions. Avoid repeated freeze-thaw cycles.
RefSeq:	<u><a href="#">NP_060315</a></u>
Locus ID:	54951
UniProt ID:	<u><a href="#">Q9NX08</a></u>
RefSeq Size:	1438

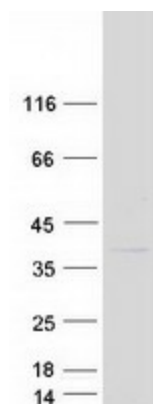

[View online »](#)

Cytogenetics: 4p12

RefSeq ORF: 549

Summary: The protein encoded by this gene binds coiled-coil domain-containing protein 22 (CCDC22), and this complex can regulate the turnover of I-kappa-B and the activation of NF-kappa-B. [provided by RefSeq, Jul 2016]

### Product images:



Coomassie blue staining of purified COMMD8 protein (Cat# [TP305085]). The protein was produced from HEK293T cells transfected with COMMD8 cDNA clone (Cat# [RC205085]) using MegaTran 2.0 (Cat# [TT210002]).