

Product datasheet for **TP305074M**

Lactate Dehydrogenase B (LDHB) (NM_002300) Human Recombinant Protein

Product data:

Product Type:	Recombinant Proteins
Description:	Recombinant protein of human lactate dehydrogenase B (LDHB), 100 µg
Species:	Human
Expression Host:	HEK293T
Expression cDNA Clone or AA Sequence:	>RC205074 representing NM_002300 Red =Cloning site Green =Tags(s)

MATLKEKLIAPVAEEEEATVPNNKITVVGQVGMACAISILGKSLADELALVDVLEDKLGEMMDLQHGS
LFLQTPKIVADKDYSVTANSKIVVWTAGVRQQEGESRLNLVQRNVNVFKFIIPQIVKYSPDCIIIVSNP
VDILTYVTWKLGLPKHRVIGSGCNLDSARFRYLMAEKLGHPSSCHGWILGEHGDSSVAVWVSGVNVAGV
SLQELNPEMGTDNSENWKEVHKMIVESAYEVIKLGKGYTNWAIGLSVADLIESMLKNLSRIHPVSTMVKG
MYGIENEVFLSLPCILNARGLTSVINQKLKDDDEVAQLKKSADTLWDIQKDLKDL

TRTRPLEQKLISEEDLAANDILDYKDDDDKV

Tag:	C-Myc/DDK
Predicted MW:	36.5 kDa
Concentration:	>0.05 µg/µL as determined by microplate BCA method
Purity:	> 80% as determined by SDS-PAGE and Coomassie blue staining
Buffer:	25 mM Tris-HCl, 100 mM glycine, pH 7.3, 10% glycerol
Preparation:	Recombinant protein was captured through anti-DDK affinity column followed by conventional chromatography steps.
Note:	For testing in cell culture applications, please filter before use. Note that you may experience some loss of protein during the filtration process.
Storage:	Store at -80°C.
Stability:	Stable for 12 months from the date of receipt of the product under proper storage and handling conditions. Avoid repeated freeze-thaw cycles.
RefSeq:	<u>NP_002291</u>
Locus ID:	3945



[View online »](#)

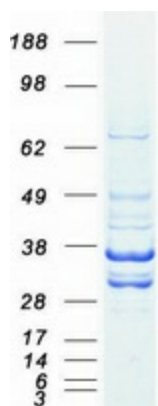
UniProt ID:	P07195 , Q5U077
RefSeq Size:	1336
Cytogenetics:	12p12.1
RefSeq ORF:	1002
Synonyms:	HEL-S-281; LDH-B; LDH-H; LDHBD; TRG-5

Summary: This gene encodes the B subunit of lactate dehydrogenase enzyme, which catalyzes the interconversion of pyruvate and lactate with concomitant interconversion of NADH and NAD⁺ in a post-glycolysis process. Alternatively spliced transcript variants have been found for this gene. Recent studies have shown that a C-terminally extended isoform is produced by use of an alternative in-frame translation termination codon via a stop codon readthrough mechanism, and that this isoform is localized in the peroxisomes. Mutations in this gene are associated with lactate dehydrogenase B deficiency. Pseudogenes have been identified on chromosomes X, 5 and 13. [provided by RefSeq, Feb 2016]

Protein Families: Druggable Genome

Protein Pathways: Cysteine and methionine metabolism, Glycolysis / Gluconeogenesis, Metabolic pathways, Propanoate metabolism, Pyruvate metabolism

Product images:



Coomassie blue staining of purified LDHB protein (Cat# [TP305074]). The protein was produced from HEK293T cells transfected with LDHB cDNA clone (Cat# [RC205074]) using MegaTran 2.0 (Cat# [TT210002]).