

## Product datasheet for **TP305063M**

### **FBXO6 (NM\_018438) Human Recombinant Protein**

#### **Product data:**

**Product Type:** Recombinant Proteins

**Description:** Recombinant protein of human F-box protein 6 (FBXO6), 100 µg

**Species:** Human

**Expression Host:** HEK293T

**Expression cDNA Clone  
or AA Sequence:** >RC205063 protein sequence  
**Red**=Cloning site **Green**=Tags(s)

MDAPHSKAALDSINELPENILLELFTHVPARQLLLNCRVCSLWRDLIDLMTLWKRKCLREGFITKDWDQ  
PVADWKIFYFLRSLHRNLLRNPCAEEEDMFAWQIDFNGGDRWKVESLPGAHTDFDPKVKKYFVTSYEMC  
LKSQVLVDLVAEGYWEELLDTRPDIVVKDWFAARADCGCTYQLKVQLASADYFVLASFEPPTVIQQWNN  
ATWTEVSYTFSDYPRGVRYILFQHGGRTQYWAGWYGPRVTNSSIVSPKMTRNQASSEAQPQKHGQEE  
AAQSPYRAVVQIF

**TR**TRPLE**QKLISEEDLAANDILDYKDDDDKV**

**Tag:** C-Myc/DDK

**Predicted MW:** 33.8 kDa

**Concentration:** >0.05 µg/µL as determined by microplate BCA method

**Purity:** > 80% as determined by SDS-PAGE and Coomassie blue staining

**Buffer:** 25 mM Tris-HCl, 100 mM glycine, pH 7.3, 10% glycerol

**Preparation:** Recombinant protein was captured through anti-DDK affinity column followed by conventional chromatography steps.

**Note:** For testing in cell culture applications, please filter before use. Note that you may experience some loss of protein during the filtration process.

**Storage:** Store at -80°C.

**Stability:** Stable for 12 months from the date of receipt of the product under proper storage and handling conditions. Avoid repeated freeze-thaw cycles.

**RefSeq:** [NP\\_060908](#)

**Locus ID:** 26270



[View online »](#)

UniProt ID: [Q9NRD1](#)

RefSeq Size: 1565

Cytogenetics: 1p36.22

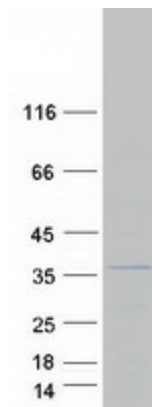
RefSeq ORF: 879

Synonyms: FBG2; FBS2; FBX6; Fbx6b

**Summary:** This gene encodes a member of the F-box protein family which is characterized by an approximately 40 amino acid motif, the F-box. The F-box proteins constitute one of the four subunits of the ubiquitin protein ligase complex called SCFs (SKP1-cullin-F-box), which function in phosphorylation-dependent ubiquitination. The F-box proteins are divided into 3 classes: Fbws containing WD-40 domains, Fbls containing leucine-rich repeats, and Fbxs containing either different protein-protein interaction modules or no recognizable motifs. The protein encoded by this gene belongs to the Fbxs class, and its C-terminal region is highly similar to that of rat NFB42 (neural F Box 42 kDa) which may be involved in the control of the cell cycle. [provided by RefSeq, Jul 2008]

**Protein Families:** Druggable Genome

### Product images:



Coomassie blue staining of purified FBXO6 protein (Cat# [TP305063]). The protein was produced from HEK293T cells transfected with FBXO6 cDNA clone (Cat# [RC205063]) using MegaTran 2.0 (Cat# [TT210002]).