

Product datasheet for **TP305058M**

ARSF (NM_004042) Human Recombinant Protein

Product data:

Product Type:	Recombinant Proteins
Description:	Recombinant protein of human arylsulfatase F (ARSF), 100 µg
Species:	Human
Expression Host:	HEK293T
Expression cDNA Clone or AA Sequence:	>RC205058 protein sequence Red =Cloning site Green =Tags(s)

MRPRRPLVFM SLV CALLNTCQAHRVHDDKPNIVLIMVDDLIGDLGCYGN DTM RTPHIDRLAREGVRLTQ
HISAASLCSPSRSAFLTGRYP IIRSGMVSSGNRRVIQNLAVPAGLPLNETTLAALLKKQGYSTGLIGKWHQ
GLNCDSRSDQCHHPYNYGFDYYYGMPFTLV DSCWPDPSRNT ELAFESQLWLCVQLVAIAILTLFGKLSG
WVSV P WLLIFSMILFIFLLGYAWFSSHTSPLYWDCLLMRGHEITEQPMKAERAGSIMVKEAISFLERHSK
ETFLFFSFLHVHTPLPTTDDFTGTSKHGLYGDNVEEMDSMVGKILDAIDDFGLRNNTLVYFTSDHGGHL
EARRGHAQLGGWNGIYKGGKGMGGWEGGIRVPGIVRWPGKVPAGRLIKEPTSLMDILPTVASVSGGSLPQ
DRVIDGRDLMP LLQGNVRHSEHEFLFHYCGSYLHAVRWIPKDDSGSVWKAHYVTPVFQPPASGGCYV TSL
CRCFGEQVTYHNP LLFDLSRDPSESTPLTPATEPLYDFVIKKVANALKEHQETIVPVTYQLSELNQGR T
WLKPCCGVFPFCLCDKKEEVSQPRGPNEKR

TRTRPLEQKLISEEDLAANDILDYKDDDDKV

Tag:	C-Myc/DDK
Predicted MW:	63.7 kDa
Concentration:	>0.05 µg/µL as determined by microplate BCA method
Purity:	> 80% as determined by SDS-PAGE and Coomassie blue staining
Buffer:	25 mM Tris-HCl, 100 mM glycine, pH 7.3, 10% glycerol
Preparation:	Recombinant protein was captured through anti-DDK affinity column followed by conventional chromatography steps.
Note:	For testing in cell culture applications, please filter before use. Note that you may experience some loss of protein during the filtration process.
Storage:	Store at -80°C.



[View online »](#)

Stability: Stable for 12 months from the date of receipt of the product under proper storage and handling conditions. Avoid repeated freeze-thaw cycles.

RefSeq: [NP_004033](#)

Locus ID: 416

UniProt ID: [P54793](#)

RefSeq Size: 2048

Cytogenetics: Xp22.33

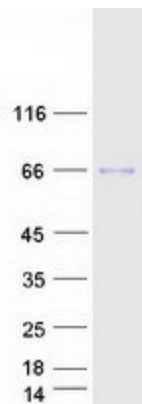
RefSeq ORF: 1770

Synonyms: ASF

Summary: This gene is a member of the sulfatase family, and more specifically, the arylsulfatase subfamily. Members of the subfamily share similarity in sequence and splice sites, and are clustered together on chromosome X, suggesting that they are derived from recent gene duplication events. Sulfatases are essential for the correct composition of bone and cartilage matrix. The activity of this protein, unlike that of arylsulfatase E, is not inhibited by warfarin. Multiple alternatively spliced variants, encoding the same protein, have been identified. [provided by RefSeq, Jan 2011]

Protein Families: Druggable Genome, Secreted Protein, Transmembrane

Product images:



Coomassie blue staining of purified ARSF protein (Cat# [TP305058]). The protein was produced from HEK293T cells transfected with ARSF cDNA clone (Cat# [RC205058]) using MegaTran 2.0 (Cat# [TT210002]).