

Product datasheet for **TP305057**

FAM151A (NM_176782) Human Recombinant Protein

Product data:

Product Type: Recombinant Proteins
Description: Recombinant protein of human family with sequence similarity 151, member A (FAM151A), 20 µg
Species: Human
Expression Host: HEK293T
Expression cDNA Clone or AA Sequence: >RC205057 protein sequence
Red=Cloning site **Green**=Tags(s)

MVCREQLSKNQVKWVFAGITCVSVVIAAIVLAITLRRPGCELEACSPDADMLDYLLSLGQISRRDALEV
TWYHAANSKKAMTAALDSNITVLEADVNVVEGLGTANETGVPIMAHPPTTYSNDNTLEQWLDVAVLGSSQKGI
KLDLFKNIKAVGPSLDLLRQLTEEGKVRRIWINADILKGNMLISTEVNATQFLALVQEYKPKATLSPGW
TTFYMSTSPNRTYTQAMVEKMHELVEGVPQVRVTFPVRSSMVRAAWPHFSWLLSQSERYSLTLWQAASDPM
SVEDLLYVRDNTAVHQVYYDIFEPILLSQFKQLALNATRPMYYTGGSLIPLLQLPGDDGLNVEWLVDPVQ
GSGKTATMTLPDTEGMILLNTGLEGTVAENPVPIVHTPSGNILTLESCLQQLATHPGHWGIHLQIVEPAA
LRPSLALLARLSSLGLLHWPVWVGAKISHGFSVPGHVAGRELLTAVAEVFPHTVAPGWPEEVLGSGYR
EQLLTDMLELCQGLWQPVSFQMAMLLGHSTAGAIGRLLASSPRATVTVHEHPAGGGDYASVRTALLAARA
VDRTRVYYRLPQGYHKDLLAHVGRN

TRTRPLEQKLISEEDLAANDILDYKDDDDKV

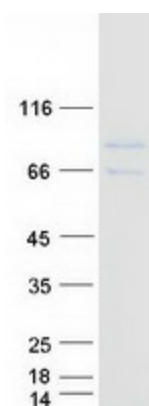
Tag: C-Myc/DDK
Predicted MW: 63.8 kDa
Concentration: >0.05 µg/µL as determined by microplate BCA method
Purity: > 80% as determined by SDS-PAGE and Coomassie blue staining
Buffer: 25 mM Tris-HCl, 100 mM glycine, pH 7.3, 10% glycerol
Preparation: Recombinant protein was captured through anti-DDK affinity column followed by conventional chromatography steps.
Note: For testing in cell culture applications, please filter before use. Note that you may experience some loss of protein during the filtration process.
Storage: Store at -80°C.



[View online »](#)

Stability:	Stable for 12 months from the date of receipt of the product under proper storage and handling conditions. Avoid repeated freeze-thaw cycles.
RefSeq:	NP_788954
Locus ID:	338094
UniProt ID:	Q8WW52
RefSeq Size:	1998
RefSeq ORF:	1755
Synonyms:	C1orf179
Protein Families:	Transmembrane

Product images:



Coomassie blue staining of purified FAM151A protein (Cat# TP305057). The protein was produced from HEK293T cells transfected with FAM151A cDNA clone (Cat# [RC205057]) using MegaTran 2.0 (Cat# [TT210002]).