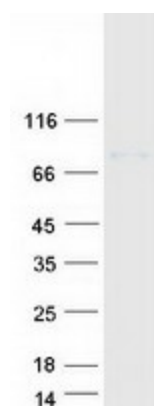




<b>Storage:</b>	Store at -80°C.
<b>Stability:</b>	Stable for 12 months from the date of receipt of the product under proper storage and handling conditions. Avoid repeated freeze-thaw cycles.
<b>RefSeq:</b>	<a href="#">NP_000332</a>
<b>Locus ID:</b>	6519
<b>UniProt ID:</b>	<a href="#">Q07837</a> , <a href="#">A0A0S2Z4E1</a>
<b>RefSeq Size:</b>	2323
<b>Cytogenetics:</b>	2p21
<b>RefSeq ORF:</b>	2055
<b>Synonyms:</b>	ATR1; CSNU1; D2H; NBAT; RBAT
<b>Summary:</b>	This gene encodes a type II membrane glycoprotein which is one of the components of the renal amino acid transporter which transports neutral and basic amino acids in the renal tubule and intestinal tract. Mutations and deletions in this gene are associated with cystinuria. Alternatively spliced transcript variants have been described, but their biological validity has not been determined. [provided by RefSeq, Jul 2008]
<b>Protein Families:</b>	Druggable Genome, Transmembrane

### Product images:



Coomassie blue staining of purified SLC3A1 protein (Cat# [TP305049]). The protein was produced from HEK293T cells transfected with SLC3A1 cDNA clone (Cat# [RC205049]) using MegaTran 2.0 (Cat# [TT210002]).