

## Product datasheet for **TP305049L**

### SLC3A1 (NM\_000341) Human Recombinant Protein

#### Product data:

**Product Type:** Recombinant Proteins

**Description:** Recombinant protein of human solute carrier family 3 (cystine, dibasic and neutral amino acid transporters, activator of cystine, dibasic and neutral amino acid transport), member 1 (SLC3A1), 1 mg

**Species:** Human

**Expression Host:** HEK293T

**Expression cDNA Clone or AA Sequence:** >RC205049 representing NM\_000341  
**Red**=Cloning site **Green**=Tags(s)

MAEDKSKRDSIEMSMKGCQTNNGFVHNEDILEQTPDPGSSTDNLKHSTRGILGSQEPDFKGVQPYAGMPK  
EVLFQFSGQARYRIPREILFWLTVASVLVLIATAIIALSPKCLDWWQEGPMYQIYPRSFKDSNKDGNG  
DLKGIQDKLDYITALNIKTWITSFYKSSLKDFRYGVEDFREVDPFIGTMEDFENLVAAIHDKGLKLIID  
FIPNHTSDKHIWFQLSRTRTGKYTDYYIWHDC THENGKTIPPNNWLSVYGNSSWHFDEVRNQCYFHQFMK  
EQPDLNFRNPDVQEEIKEILRFWLTKGVDGFSLD AVKFLLEAKHLRDEIQVNTQIPDVTVTQYSELYHDF  
TTTQVGMHDIRSFRQTMQDYSTEPGRYRFMGTEAYAESIDRTVMYYGLPFIQEADFPFNLYSMLD TVS  
GNSVYEVITSWMENMPEGKWPWNMIGGPDSSRLTSRLGNQYVNVNMNMLLFTLPGTPITYGEEIGMGNIV  
AANL NESYDINTLRSKSPMQWDN SSNAGFSEASNTWLPTNSDYHTVNV DVQKTQPR SALKLYQDLSLLHA  
NELLLNRGWFC HLRNDSHYVYVY TRELDGIDRIFIVL NFGESTLLNLHNMISGLPAKIRIRLSTNSADKG  
SKVDTSIGIFLDKGEGLIFEHNTKNLLHRQTAFRDRCFVSNRACYSSVLNILYTSC

**TR**TRPLEQKLISEEDLAANDILDYKDDDDKV

**Tag:** C-Myc/DDK

**Predicted MW:** 78.7 kDa

**Concentration:** >0.05 µg/µL as determined by microplate BCA method

**Purity:** > 80% as determined by SDS-PAGE and Coomassie blue staining

**Buffer:** 25 mM Tris-HCl, 100 mM glycine, pH 7.3, 10% glycerol

**Preparation:** Recombinant protein was captured through anti-DDK affinity column followed by conventional chromatography steps.

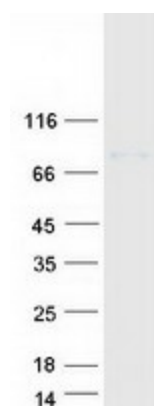
**Note:** For testing in cell culture applications, please filter before use. Note that you may experience some loss of protein during the filtration process.



[View online »](#)

<b>Storage:</b>	Store at -80°C.
<b>Stability:</b>	Stable for 12 months from the date of receipt of the product under proper storage and handling conditions. Avoid repeated freeze-thaw cycles.
<b>RefSeq:</b>	<a href="#">NP_000332</a>
<b>Locus ID:</b>	6519
<b>UniProt ID:</b>	<a href="#">Q07837</a> , <a href="#">A0A0S2Z4E1</a>
<b>RefSeq Size:</b>	2323
<b>Cytogenetics:</b>	2p21
<b>RefSeq ORF:</b>	2055
<b>Synonyms:</b>	ATR1; CSNU1; D2H; NBAT; RBAT
<b>Summary:</b>	This gene encodes a type II membrane glycoprotein which is one of the components of the renal amino acid transporter which transports neutral and basic amino acids in the renal tubule and intestinal tract. Mutations and deletions in this gene are associated with cystinuria. Alternatively spliced transcript variants have been described, but their biological validity has not been determined. [provided by RefSeq, Jul 2008]
<b>Protein Families:</b>	Druggable Genome, Transmembrane

### Product images:



Coomassie blue staining of purified SLC3A1 protein (Cat# [TP305049]). The protein was produced from HEK293T cells transfected with SLC3A1 cDNA clone (Cat# [RC205049]) using MegaTran 2.0 (Cat# [TT210002]).