

Product datasheet for **TP305047M**

PPP1R1C (NM_001080545) Human Recombinant Protein

Product data:

Product Type:	Recombinant Proteins
Description:	Recombinant protein of human protein phosphatase 1, regulatory (inhibitor) subunit 1C (PPP1R1C), 100 µg
Species:	Human
Expression Host:	HEK293T
Expression cDNA Clone or AA Sequence:	>RC205047 protein sequence Red =Cloning site Green =Tags(s)
	MEPNSPKKIQFAVPVFQSQIAPEAAEQIRKRRPTASLVILNEHNPPEIDDKRGPNTQGELQNASPKQRK QSVYTPPTIKGVKHLKGQNESAFPEEEEGTNEREEQRDH
	TR TRPLEQKLISEEDLAANDILDYKDDDDKV
Tag:	C-Myc/DDK
Predicted MW:	12.2 kDa
Concentration:	>0.05 µg/µL as determined by microplate BCA method
Purity:	> 80% as determined by SDS-PAGE and Coomassie blue staining
Buffer:	25 mM Tris-HCl, 100 mM glycine, pH 7.3, 10% glycerol
Preparation:	Recombinant protein was captured through anti-DDK affinity column followed by conventional chromatography steps.
Note:	For testing in cell culture applications, please filter before use. Note that you may experience some loss of protein during the filtration process.
Storage:	Store at -80°C.
Stability:	Stable for 12 months from the date of receipt of the product under proper storage and handling conditions. Avoid repeated freeze-thaw cycles.
RefSeq:	<u>NP_001074014</u>
Locus ID:	151242
UniProt ID:	<u>Q8WV17</u>
RefSeq Size:	1078



[View online »](#)

Cytogenetics: 2q31.3-q32.1

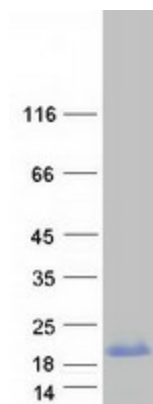
RefSeq ORF: 327

Synonyms: IPP5

Summary: Protein phosphatase-1 (PP1) is a major serine/threonine phosphatase that regulates a variety of cellular functions. PP1 consists of a catalytic subunit (see PPP1CA; MIM 176875) and regulatory subunits that determine the subcellular localization of PP1 or regulate its function. PPP1R1C belongs to a group of PP1 inhibitory subunits that are themselves regulated by phosphorylation (Wang et al., 2008 [PubMed 18310074]).[supplied by OMIM, Feb 2010]

Protein Families: Druggable Genome, Phosphatase

Product images:



Coomassie blue staining of purified PPP1R1C protein (Cat# [TP305047]). The protein was produced from HEK293T cells transfected with PPP1R1C cDNA clone (Cat# [RC205047]) using MegaTran 2.0 (Cat# [TT210002]).