

Product datasheet for **TP305042**

IFI44 (NM_006417) Human Recombinant Protein

Product data:

Product Type: Recombinant Proteins

Description: Recombinant protein of human interferon-induced protein 44 (IFI44), 20 µg

Species: Human

Expression Host: HEK293T

Expression cDNA Clone or AA Sequence: >RC205042 protein sequence
Red=Cloning site **Green**=Tags(s)

MAVTTRLRLHEKILQNHFGGKRLSLLYKGSVHGFNRNGVLLDRCCNQGPTLTVIYSEDHIIGAYAEESYQ
EGKYASIILFALQDTKISEWKLGLCTPETLFCCDVTKYNSPTNFQIDGRNRKVMIDLKTMENLGLAQNCT
ISIQDYEVFRCEDSLDERKIKGVIELRKSLLSALRTYEPYGSQVQIRILLGPIGAGKSSFFNSVRSVF
QGHVTHQALVGTNTTGISEKYRTYSIRDGKDGKYLPHLDCSLGLSEKGGCLCRDDIFYLNGNIRDYQ
FNPMESIKLNHHDYIDSPSLKDRHCVAVFVDASSIQYFSSQMIVKIKRIRRELVNAGVHVHALLTHVDS
MDLITKGDLEIERCEPVRSKLEEVQRKLGFAISDISVVSNSYSSEWELDPVKDVLILSALRRMLWAADDF
LEDLPFEQIGNLREEIINCAQGKK

TRTRPLEQKLISEEDLAANDILDYKDDDDKV

Tag: C-Myc/DDK

Predicted MW: 50.3 kDa

Concentration: >0.05 µg/µL as determined by microplate BCA method

Purity: > 80% as determined by SDS-PAGE and Coomassie blue staining

Buffer: 25 mM Tris-HCl, 100 mM glycine, pH 7.3, 10% glycerol

Preparation: Recombinant protein was captured through anti-DDK affinity column followed by conventional chromatography steps.

Note: For testing in cell culture applications, please filter before use. Note that you may experience some loss of protein during the filtration process.

Storage: Store at -80°C.

Stability: Stable for 12 months from the date of receipt of the product under proper storage and handling conditions. Avoid repeated freeze-thaw cycles.

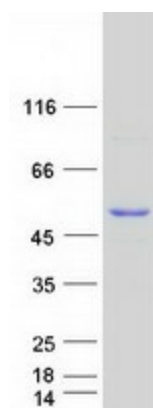
RefSeq: [NP_006408](#)



[View online »](#)

Locus ID:	10561
UniProt ID:	Q8TCB0
RefSeq Size:	1742
Cytogenetics:	1p31.1
RefSeq ORF:	1332
Synonyms:	MTAP44; p44; TLDC5
Summary:	This protein aggregates to form microtubular structures.[UniProtKB/Swiss-Prot Function]

Product images:



Coomassie blue staining of purified IFI44 protein (Cat# TP305042). The protein was produced from HEK293T cells transfected with IFI44 cDNA clone (Cat# [RC205042]) using MegaTran 2.0 (Cat# [TT210002]).