

Product datasheet for **TP305033L**

RAB2B (NM_032846) Human Recombinant Protein

Product data:

Product Type:	Recombinant Proteins
Description:	Recombinant protein of human RAB2B, member RAS oncogene family (RAB2B), 1 mg
Species:	Human
Expression Host:	HEK293T
Expression cDNA Clone or AA Sequence:	>RC205033 protein sequence Red =Cloning site Green =Tags(s)
	 MTYAYLFKYIIIGDTGVGKSCLLLQFTDKRFQPVHDLTIGVEFGARMVNIIDGKQIKLQIWDTAGQESFRS ITRSYYRGAAGALLVYDITRRETFNHLTSWLEDARQHSSSNMVIMLIGNKSDLESRRDVKREEGEAFARE HGLIFMETSAKTACNVVEAFINTAKEIYRKIQQLFDVHNEANGIKIGPQQSISTSVGPSASQRNSRDIG SNSGCC TRTRPLEQKLISEEDLAANDILDYKDDDDKV
Tag:	C-Myc/DDK
Predicted MW:	24 kDa
Concentration:	>0.05 µg/µL as determined by microplate BCA method
Purity:	> 80% as determined by SDS-PAGE and Coomassie blue staining
Buffer:	25 mM Tris-HCl, 100 mM glycine, pH 7.3, 10% glycerol
Preparation:	Recombinant protein was captured through anti-DDK affinity column followed by conventional chromatography steps.
Note:	For testing in cell culture applications, please filter before use. Note that you may experience some loss of protein during the filtration process.
Storage:	Store at -80°C.
Stability:	Stable for 12 months from the date of receipt of the product under proper storage and handling conditions. Avoid repeated freeze-thaw cycles.
RefSeq:	NP_116235
Locus ID:	84932
UniProt ID:	Q8WUD1



[View online »](#)

RefSeq Size: 2956

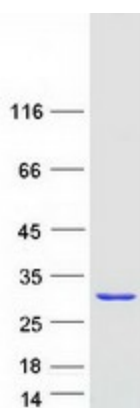
Cytogenetics: 14q11.2

RefSeq ORF: 648

Summary: Members of the Rab protein family are nontransforming monomeric GTP-binding proteins of the Ras superfamily that contain 4 highly conserved regions involved in GTP binding and hydrolysis. Rab proteins are prenylated, membrane-bound proteins involved in vesicular fusion and trafficking; see MIM 179508.[supplied by OMIM, Apr 2006]

Protein Families: Druggable Genome

Product images:



Coomassie blue staining of purified RAB2B protein (Cat# [TP305033]). The protein was produced from HEK293T cells transfected with RAB2B cDNA clone (Cat# [RC205033]) using MegaTran 2.0 (Cat# [TT210002]).