

Product datasheet for **TP305023L**

CCDC12 (NM_144716) Human Recombinant Protein

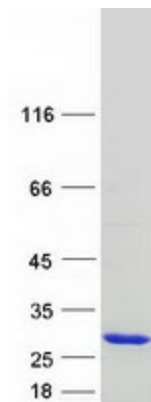
Product data:

| | |
|---------------------------------------|--|
| Product Type: | Recombinant Proteins |
| Description: | Recombinant protein of human coiled-coil domain containing 12 (CCDC12), 1 mg |
| Species: | Human |
| Expression Host: | HEK293T |
| Expression cDNA Clone or AA Sequence: | >RC205023 protein sequence Red =Cloning site Green =Tags(s) |
| | MEATTAGVGRLEEEALRRKERLKAALREKTGRKDKEDGEPKTKHLREEEEEGEKHRELRLRNYVPEDEDLK KRRVPQAKPVAVEEKVKEQLEAAKPEPVIEEVDLANLAPRKPDPDWDLKRDVAKKLEKLEKRTQRAIAELIR ERLKGQEDSLASAVDAATEQKTCDS TRTRPLEQKLISEEDLAANDILDYKDDDDKV |
| Tag: | C-Myc/DDK |
| Predicted MW: | 20.3 kDa |
| Concentration: | >0.05 µg/µL as determined by microplate BCA method |
| Purity: | > 80% as determined by SDS-PAGE and Coomassie blue staining |
| Buffer: | 25 mM Tris-HCl, 100 mM glycine, pH 7.3, 10% glycerol |
| Preparation: | Recombinant protein was captured through anti-DDK affinity column followed by conventional chromatography steps. |
| Note: | For testing in cell culture applications, please filter before use. Note that you may experience some loss of protein during the filtration process. |
| Storage: | Store at -80°C. |
| Stability: | Stable for 12 months from the date of receipt of the product under proper storage and handling conditions. Avoid repeated freeze-thaw cycles. |
| RefSeq: | NP_653317 |
| Locus ID: | 151903 |
| UniProt ID: | J3KR35 |
| RefSeq Size: | 1035 |



[View online »](#)

Cytogenetics: 3p21.31
RefSeq ORF: 498
Protein Pathways: Spliceosome

Product images:

Coomassie blue staining of purified CCDC12 protein (Cat# [TP305023]). The protein was produced from HEK293T cells transfected with CCDC12 cDNA clone (Cat# [RC205023]) using MegaTran 2.0 (Cat# [TT210002]).