

## Product datasheet for **TP305022**

### TMED6 (NM\_144676) Human Recombinant Protein

#### Product data:

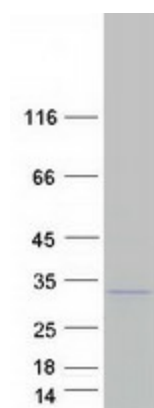
Product Type:	Recombinant Proteins
Description:	Recombinant protein of human transmembrane emp24 protein transport domain containing 6 (TMED6), 20 µg
Species:	Human
Expression Host:	HEK293T
Expression cDNA	>RC205022 protein sequence
Clone or AA	Red=Cloning site Green=Tags(s)
Sequence:	<p>MSPLLFGAGLVVLNLVTSARSQKTEPLSGSGDQPLFRGADRYDFAIMIPPGGTECFWQFAHQGTGYFYFSC EVQRTVGMSHDRHVAATAHNPQGFLIDTSQGVRGQINFSTQETGFYQLCLSNQHNHFGSVQVYLNFGVYF EGPETDHKQKERKQLNDTLDAIEDGTQKVQNNIFHWMRYNFMARMKMAFFLIQSNNYVNWSTAQSL VIILSGILQLYFLKRLFNVPPTTTDTKKPRC</p> <p>TRTRPLEQKLISEEDLAANDILDYKDDDDKV</p>
Tag:	C-Myc/DDK
Predicted MW:	27.5 kDa
Concentration:	>0.05 µg/µL as determined by microplate BCA method
Purity:	> 80% as determined by SDS-PAGE and Coomassie blue staining
Buffer:	25 mM Tris-HCl, 100 mM glycine, pH 7.3, 10% glycerol
Preparation:	Recombinant protein was captured through anti-DDK affinity column followed by conventional chromatography steps.
Note:	For testing in cell culture applications, please filter before use. Note that you may experience some loss of protein during the filtration process.
Storage:	Store at -80°C.
Stability:	Stable for 12 months from the date of receipt of the product under proper storage and handling conditions. Avoid repeated freeze-thaw cycles.
RefSeq:	<u><a href="#">NP_653277</a></u>
Locus ID:	146456



[View online »](#)

UniProt ID: Q8WW62  
 RefSeq Size: 940  
 Cytogenetics: 16q22.1  
 RefSeq ORF: 720  
 Synonyms: p24g5; PRO34237; SPL9146  
 Protein Families: Transmembrane

### Product images:



Coomassie blue staining of purified TMED6 protein (Cat# TP305022). The protein was produced from HEK293T cells transfected with TMED6 cDNA clone (Cat# [RC205022]) using MegaTran 2.0 (Cat# [TT210002]).