

## Product datasheet for TP305014

### C6orf118 (NM\_144980) Human Recombinant Protein

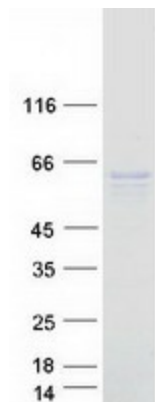
#### Product data:

Product Type:	Recombinant Proteins
Description:	Recombinant protein of human chromosome 6 open reading frame 118 (C6orf118), 20 µg
Species:	Human
Expression Host:	HEK293T
Expression cDNA Clone or AA Sequence:	>RC205014 protein sequence <b>Red</b> =Cloning site <b>Green</b> =Tags(s)
	<p>MAEEREPELYLKWKHCETPGVKTLNPKHCETPGVKTLNPKLLNRLQKDHREDVYLYISGHLNPNKLY QPPETILQHPNAHRPKGERASEVGEPPAGKVARMKEALAHFTIHTALVPSEAQDTPLFRYLNQASLSH TSEEDFLPVEAVREGKKEKGGPPGRGPPGWRRREELRLPDLKVLQYQEQAGSRGTRDRHHYVSSYLAGAT SADRYRMFLRFQKEVLAKQDLLKNDFTGSKAAAGHERKLQQLQKMQCTCSPQQFNRLHVFQKVFEDICNS SLIFGDLLKKVKDEYELMATLLESQPAAYEALLAQLKALGQRPVKTADMDLAREELRMLVTATKAAL QNDRLRSELEMELALLQSAKERSESEKHIIDENQLTLTEKVEKKRCEILSKWDEIQALEKEIKTLVHT GISDITENRIKSIEHEAIQLETENMILKKKIKGPLEIYQGICKIRGNRR</p> <p><b>TRTRPLEQKLISEEDLAANDILDYKDDDDKV</b></p>
Tag:	C-Myc/DDK
Predicted MW:	53.6 kDa
Concentration:	>0.05 µg/µL as determined by microplate BCA method
Purity:	> 80% as determined by SDS-PAGE and Coomassie blue staining
Buffer:	25 mM Tris-HCl, 100 mM glycine, pH 7.3, 10% glycerol
Preparation:	Recombinant protein was captured through anti-DDK affinity column followed by conventional chromatography steps.
Note:	For testing in cell culture applications, please filter before use. Note that you may experience some loss of protein during the filtration process.
Storage:	Store at -80°C.
Stability:	Stable for 12 months from the date of receipt of the product under proper storage and handling conditions. Avoid repeated freeze-thaw cycles.
RefSeq:	<u><a href="#">NP_659417</a></u>



[View online »](#)

Locus ID:	168090
UniProt ID:	<a href="#">Q5T5N4</a>
RefSeq Size:	1852
Cytogenetics:	6q27
RefSeq ORF:	1407
Synonyms:	bA85G2.1; dj416F21.2

**Product images:**

Coomassie blue staining of purified C6orf118 protein (Cat# TP305014). The protein was produced from HEK293T cells transfected with C6orf118 cDNA clone (Cat# [RC205014]) using MegaTran 2.0 (Cat# [TT210002]).