

## Product datasheet for **TP305013L**

### SSB (NM\_003142) Human Recombinant Protein

#### Product data:

Product Type:	Recombinant Proteins
Description:	Recombinant protein of human Sjogren syndrome antigen B (autoantigen La) (SSB), 1 mg
Species:	Human
Expression Host:	HEK293T
Expression cDNA Clone or AA Sequence:	>RC205013 protein sequence <b>Red</b> =Cloning site <b>Green</b> =Tags(s)
	<p>MAENGDNEKMAALEAKICHQIEYYFGDFNLPRDKFLKEQIKLDEGWVPLEIMIKFNRLNRLTTDFNVIVE ALSLSKAELMEISEDKTKIRRSPLPEVTDDEYKNDVKNRSVYIKGFPTDATTDDIKEWLEDKGVVNI QMRRTLHKAFKGSIFVFDSESIAKFKVETPGQKYKEDLLILFKDDYFAKNEERKQNKVEAKLRAKQE QEAKQKLEEDAEMKSLEEKIGCLLKFSGLDDQTCREDLHILFSNHGEIKWIDFVRGAKEGILFKEKAK EALGKAKDANNLQLRNKEVTWEVLEGEVEKEALKIIEDQESLNKWKSKGRRFKGKGGKGNKAAQPGS GKGVQFQGGKTKFASDDEHDEHDENGATGPVKRAREETDKEEPASKQKKTENGAGDQ</p> <p><b>TRTRPLEQKLISEEDLAANDILDYKDDDDKV</b></p>
Tag:	C-Myc/DDK
Predicted MW:	46.7 kDa
Concentration:	>0.05 µg/µL as determined by microplate BCA method
Purity:	> 80% as determined by SDS-PAGE and Coomassie blue staining
Buffer:	25 mM Tris-HCl, 100 mM glycine, pH 7.3, 10% glycerol
Preparation:	Recombinant protein was captured through anti-DDK affinity column followed by conventional chromatography steps.
Note:	For testing in cell culture applications, please filter before use. Note that you may experience some loss of protein during the filtration process.
Storage:	Store at -80°C.
Stability:	Stable for 12 months from the date of receipt of the product under proper storage and handling conditions. Avoid repeated freeze-thaw cycles.
RefSeq:	<a href="#">NP_003133</a>
Locus ID:	6741



[View online »](#)

UniProt ID: [P05455](#)

RefSeq Size: 1719

Cytogenetics: 2q31.1

RefSeq ORF: 1224

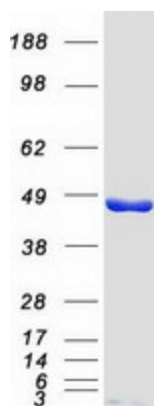
Synonyms: La; La/SSB; LARP3

**Summary:** The protein encoded by this gene is involved in diverse aspects of RNA metabolism, including binding and protecting poly(U) termini of nascent RNA polymerase III transcripts from exonuclease digestion, processing 5' and 3' ends of pre-tRNA precursors, acting as an RNA chaperone, and binding viral RNAs associated with hepatitis C virus. Autoantibodies reacting with this protein are found in the sera of patients with Sjogren syndrome and systemic lupus erythematosus. Alternative promoter usage results in two different transcript variants which encode the same protein. [provided by RefSeq, Jun 2014]

**Protein Families:** Stem cell - Pluripotency, Transcription Factors

**Protein Pathways:** Systemic lupus erythematosus

### Product images:



Coomassie blue staining of purified SSB protein (Cat# [TP305013]). The protein was produced from HEK293T cells transfected with SSB cDNA clone (Cat# [RC205013]) using MegaTran 2.0 (Cat# [TT210002]).