

Product datasheet for **TP305008L**

Tubulin (TUBA1B) (NM_006082) Human Recombinant Protein

Product data:

Product Type: Recombinant Proteins

Description: Recombinant protein of human tubulin, alpha 1b (TUBA1B), 1 mg

Species: Human

Expression Host: HEK293T

**Expression cDNA Clone
or AA Sequence:** >RC205008 protein sequence
Red=Cloning site **Green**=Tags(s)

MRECISIHVGQAGVQIGNACWELYCLEHGIQPDGQMPSDKTIGGGDDSFNTFFSETGAGKHVPRAVFVDL
EPTVIDEVRTGTYRQLFHPEQLITGKEDAANNYARGHYTIGKEIIDLVLDRIKRLADQCTGLQGFLVFHS
FGGGTGSFGFTSLLMERLSVDYGGKSKLEFSIYPAPQVSTAVVEPYNSILTTHTTLEHSDCAFMDNEAIY
DICRRNLDIRPTYTNLNRISQIVSSITASLRFDGALNVDLTEFQTNLVPYPRIHFPLATYAPVISA EK
AYHEQLSVAEITNACFEPANQMVKCDPRHGKYM ACCLLYRGDWPVKDVNAAIATIKTKRSIQFVDWCPTG
FKVGINYQPPTVPPGGDLAKVQRAVCMLSNTTAIAEAWARLDHKFDLMYAKRAFVHWYV GEGMEEGEFSE
AREDMAALEKDYEEVGVDSVEGEGEEEGEEY

TRTRPLEQKLISEEDLAANDILDYKDDDDKV

Tag: C-Myc/DDK

Predicted MW: 50 kDa

Concentration: >0.05 µg/µL as determined by microplate BCA method

Purity: > 80% as determined by SDS-PAGE and Coomassie blue staining

Buffer: 25 mM Tris-HCl, 100 mM glycine, pH 7.3, 10% glycerol

Preparation: Recombinant protein was captured through anti-DDK affinity column followed by conventional chromatography steps.

Note: For testing in cell culture applications, please filter before use. Note that you may experience some loss of protein during the filtration process.

Storage: Store at -80°C.

Stability: Stable for 12 months from the date of receipt of the product under proper storage and handling conditions. Avoid repeated freeze-thaw cycles.

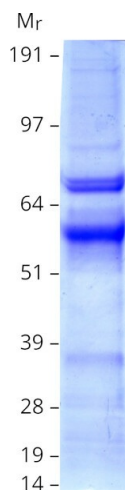
RefSeq: [NP_006073](#)



[View online »](#)

Locus ID:	10376
UniProt ID:	P68363
RefSeq Size:	1771
Cytogenetics:	12q13.12
RefSeq ORF:	1353
Synonyms:	K-ALPHA-1
Summary:	Tubulin is the major constituent of microtubules. It binds two moles of GTP, one at an exchangeable site on the beta chain and one at a non-exchangeable site on the alpha chain. [UniProtKB/Swiss-Prot Function]
Protein Families:	Druggable Genome
Protein Pathways:	Gap junction, Pathogenic Escherichia coli infection

Product images:



Coomassie blue staining of purified TUBA1B protein (Cat# [TP305008]). The protein was produced from HEK293T cells transfected with TUBA1B cDNA clone (Cat# [RC205008]) using MegaTran 2.0 (Cat# [TT210002]).