

Product datasheet for **TP305008**

Tubulin (TUBA1B) (NM_006082) Human Recombinant Protein

Product data:

Product Type:	Recombinant Proteins
Description:	Recombinant protein of human tubulin, alpha 1b (TUBA1B)
Species:	Human
Expression Host:	HEK293T
Expression cDNA Clone or AA Sequence:	>RC205008 protein sequence Red =Cloning site Green =Tags(s)

MRECISIHVGQAGVQIGNACWELYCLEHGIQPDGQMPSDKTIGGGDDSFNTFFSETGAGKHVPRAVFVDL
EPTVIDEVRTGTYRQLFHPEQLITGKEDAANNYARGHYTIGKEIIDLVLDRIKRLADQCTGLQGFLVFHS
FGGGTGSFGFTSLLMERLSVDYGGKSKLEFSIYPAPQVSTAVVEPYNSILTTHTTLEHSDCAFMDNEAIY
DICRRNLDIRPTYTNLNLISQIVSSITASLRFDGALNVDLTEFQTNLVPYPRIHFPLATYAPVISA EK
AYHEQLSVAEITNACFEPANQMVKCDPRHGKYMACCLLYRGDWPVKDVNAAIATIKTKRSIQFVDWCPTG
FKVGINYQPPTVPPGGDLAKVQRAVCMLSNTTAIAEAWARLDHKFDLMYAKRAFVHWYVGEEMEEGEFSE
AREDMAALEKDYEEVGVDSVEGEGEEEGEEY

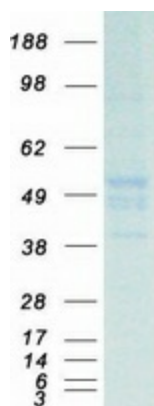
TRTRPLEQKLISEEDLAANDILDYKDDDDKV

Tag:	C-Myc/DDK
Predicted MW:	50 kDa
Concentration:	>50 ug/mL as determined by microplate BCA method
Purity:	> 80% as determined by SDS-PAGE and Coomassie blue staining
Buffer:	25 mM Tris.HCl, pH 7.3, 100 mM glycine, 10% glycerol
Preparation:	Recombinant protein was captured through anti-DDK affinity column followed by conventional chromatography steps.
Storage:	Store at -80°C.
Stability:	Stable for 12 months from the date of receipt of the product under proper storage and handling conditions. Avoid repeated freeze-thaw cycles.
RefSeq:	NP_006073
Locus ID:	10376
UniProt ID:	P68363



[View online »](#)

RefSeq Size:	1771
Cytogenetics:	12q13.12
RefSeq ORF:	1353
Synonyms:	K-ALPHA-1
Summary:	Tubulin is the major constituent of microtubules. It binds two moles of GTP, one at an exchangeable site on the beta chain and one at a non-exchangeable site on the alpha chain. [UniProtKB/Swiss-Prot Function]
Protein Families:	Druggable Genome
Protein Pathways:	Gap junction, Pathogenic Escherichia coli infection

Product images:

Coomassie blue staining of purified TUBA1B protein (Cat# TP305008). The protein was produced from HEK293T cells transfected with TUBA1B cDNA clone (Cat# [RC205008]) using MegaTran 2.0 (Cat# [TT210002]).