

## Product datasheet for **TP305004M**

### CLPS (NM\_001832) Human Recombinant Protein

#### Product data:

Product Type:	Recombinant Proteins
Description:	Recombinant protein of human colipase, pancreatic (CLPS), 100 µg
Species:	Human
Expression Host:	HEK293T
Expression cDNA Clone or AA Sequence:	>RC205004 protein sequence <b>Red</b> =Cloning site <b>Green</b> =Tags(s)
	MEKILILLVVALSVAYAAPGPRGIIINLENGELCMNSAQCKSNCCQHSSALGLARCTSMASENSECSVKT LYGIYYKPCERGLTCEGDKTIVGSITNTNFGICH DAGRSKQ
	<b>TRTRPLEQKLISEEDLAANDILDYKDDDDKV</b>
Tag:	C-Myc/DDK
Predicted MW:	10.1 kDa
Concentration:	>0.05 µg/µL as determined by microplate BCA method
Purity:	> 80% as determined by SDS-PAGE and Coomassie blue staining
Buffer:	25 mM Tris-HCl, 100 mM glycine, pH 7.3, 10% glycerol
Preparation:	Recombinant protein was captured through anti-DDK affinity column followed by conventional chromatography steps.
Note:	For testing in cell culture applications, please filter before use. Note that you may experience some loss of protein during the filtration process.
Storage:	Store at -80°C.
Stability:	Stable for 12 months from the date of receipt of the product under proper storage and handling conditions. Avoid repeated freeze-thaw cycles.
RefSeq:	<a href="#">NP_001823</a>
Locus ID:	1208
UniProt ID:	<a href="#">P04118</a>
RefSeq Size:	578
Cytogenetics:	6p21.31



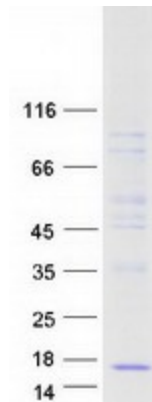
[View online »](#)

RefSeq ORF: 336

**Summary:** The protein encoded by this gene is a cofactor needed by pancreatic lipase for efficient dietary lipid hydrolysis. It binds to the C-terminal, non-catalytic domain of lipase, thereby stabilizing an active conformation and considerably increasing the overall hydrophobic binding site. The gene product allows lipase to anchor noncovalently to the surface of lipid micelles, counteracting the destabilizing influence of intestinal bile salts. This cofactor is only expressed in pancreatic acinar cells, suggesting regulation of expression by tissue-specific elements. Three transcript variants encoding different isoforms have been found for this gene. [provided by RefSeq, Nov 2011]

**Protein Families:** Secreted Protein, Transmembrane

### Product images:



Coomassie blue staining of purified CLPS protein (Cat# [TP305004]). The protein was produced from HEK293T cells transfected with CLPS cDNA clone (Cat# [RC205004]) using MegaTran 2.0 (Cat# [TT210002]).