

## Product datasheet for **TP304998**

### LYPLAL1 (NM\_138794) Human Recombinant Protein

#### Product data:

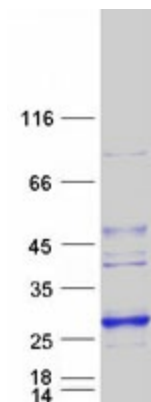
Product Type:	Recombinant Proteins
Description:	Recombinant protein of human lysophospholipase-like 1 (LYPLAL1), 20 µg
Species:	Human
Expression Host:	HEK293T
Expression cDNA Clone or AA Sequence:	>RC204998 protein sequence <b>Red</b> =Cloning site <b>Green</b> =Tags(s)
	<p>MAAASGSVLQRCIVSPAGRHSASLIFLHGSGDSGQGLRMWIKQVLNQDLTFQHIKIYPTAPPRSYTPMK GGISNVWFDRFKITNDCPEHLESIDVMCQVLTDLIDEEVKSGIKKNRILIGGFSGMGGCMAMHLAYRNHQD VAGVFALSSFLNKASAVYQALQKSNGVLPFLFQCHGTADLVLSWAEETNSMLKSLGVTTKFHSFPNVY HELKTELDILKLWILTKLPGEMEKQK</p> <p><b>TRTRPLEQKLISEEDLAANDILDYKDDDDKV</b></p>
Tag:	C-Myc/DDK
Predicted MW:	26.2 kDa
Concentration:	>0.05 µg/µL as determined by microplate BCA method
Purity:	> 80% as determined by SDS-PAGE and Coomassie blue staining
Buffer:	25 mM Tris-HCl, 100 mM glycine, pH 7.3, 10% glycerol
Preparation:	Recombinant protein was captured through anti-DDK affinity column followed by conventional chromatography steps.
Note:	For testing in cell culture applications, please filter before use. Note that you may experience some loss of protein during the filtration process.
Storage:	Store at -80°C.
Stability:	Stable for 12 months from the date of receipt of the product under proper storage and handling conditions. Avoid repeated freeze-thaw cycles.
RefSeq:	<u><a href="#">NP_620149</a></u>
Locus ID:	127018
UniProt ID:	<u><a href="#">Q5VWZ2</a></u>



[View online »](#)

RefSeq Size:	1922
Cytogenetics:	1q41
RefSeq ORF:	711
Synonyms:	Q96AV0
Summary:	Has depalmitoylating activity toward KCNMA1. Does not exhibit phospholipase nor triacylglycerol lipase activity, able to hydrolyze only short chain substrates due to its shallow active site.[UniProtKB/Swiss-Prot Function]

### Product images:



Coomassie blue staining of purified LYPLAL1 protein (Cat# TP304998). The protein was produced from HEK293T cells transfected with LYPLAL1 cDNA clone (Cat# [RC204998]) using MegaTran 2.0 (Cat# [TT210002]).