

## Product datasheet for **TP304981M**

### DPY30 (NM\_032574) Human Recombinant Protein

#### Product data:

Product Type:	Recombinant Proteins
Description:	Recombinant protein of human dpy-30 homolog (C. elegans) (DPY30), 100 µg
Species:	Human
Expression Host:	HEK293T
Expression cDNA Clone or AA Sequence:	>RC204981 protein sequence <b>Red</b> =Cloning site <b>Green</b> =Tags(s)
	MEPEQMLEGQTQVAENPHSEYGLTDNVERIVENEKINA EKSSKQKVDLQSLPTRAYLDQTVVPILLQGLA VLAKERPPNPIEFLASYLLKNKAQFEDRN
	<b>TRTRPLEQKLISEEDLAANDILDYKDDDDKV</b>
Tag:	C-Myc/DDK
Predicted MW:	11.1 kDa
Concentration:	>0.05 µg/µL as determined by microplate BCA method
Purity:	> 80% as determined by SDS-PAGE and Coomassie blue staining
Buffer:	25 mM Tris-HCl, 100 mM glycine, pH 7.3, 10% glycerol
Preparation:	Recombinant protein was captured through anti-DDK affinity column followed by conventional chromatography steps.
Note:	For testing in cell culture applications, please filter before use. Note that you may experience some loss of protein during the filtration process.
Storage:	Store at -80°C.
Stability:	Stable for 12 months from the date of receipt of the product under proper storage and handling conditions. Avoid repeated freeze-thaw cycles.
RefSeq:	<a href="#">NP_115963</a>
Locus ID:	84661
UniProt ID:	<a href="#">Q9C005</a>
RefSeq Size:	800
Cytogenetics:	2p22.3



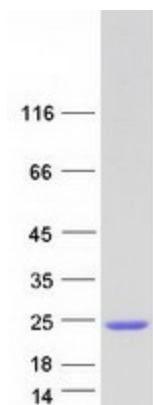
[View online »](#)

RefSeq ORF: 297

Synonyms: Cps25; HDPY-30; Saf19

Summary: This gene encodes an integral core subunit of the SET1/MLL family of H3K4 methyltransferases. The encoded protein directly controls cell cycle regulators and plays an important role in the proliferation and differentiation of human hematopoietic progenitor cells. [provided by RefSeq, Mar 2016]

### Product images:



Coomassie blue staining of purified DPY30 protein (Cat# [TP304981]). The protein was produced from HEK293T cells transfected with DPY30 cDNA clone (Cat# [RC204981]) using MegaTran 2.0 (Cat# [TT210002]).