

Product datasheet for **TP304978M**

Pregnancy Specific Glycoprotein 1 (PSG1) (NM_006905) Human Recombinant Protein

Product data:

Product Type:	Recombinant Proteins
Description:	Recombinant protein of human pregnancy specific beta-1-glycoprotein 1 (PSG1), 100 µg
Species:	Human
Expression Host:	HEK293T
Expression cDNA Clone or AA Sequence:	>RC204978 protein sequence Red =Cloning site Green =Tags(s)
	<p>MGTLSAPPCTQRIKWKGLLLTASLLNFWNLPTTAQVTIEAeptkvSEGKDVLLLHNLQPQLTGYIWKYK QMRDLYHYITSYVVDGEIIIYGPAYSGRETAYSNASLLIQNVTREDAGSYTLHIIKGGDGTGRVGTGRFTF TLHLETPKPSISSNLPRETMEAVSLTCDPETPDASYLWWMNGQSLPMTHSLKLETSNRTLFLLVGVTYK TAGPYECEIRNPVSASRSDPVTLNLLPKLPKYITINLNPRENKDVLNFTCEPKSENYTIWWLNGQSL PVSPRVKRPIENRILILPSVTRNETGPYQCEIRDYGGIRSDPVTLNVLVYGPDLPRIYPSFTYYRSGEVL YLSCSADSNPPAQYSWTINEKFQLPGQKLFIRHITTKHSGLYVCSVRNSATGKESSKSMTVEVSGKWIPA SLAIGF</p> <p>TRTRPLEQKLISEEDLAANDILDYKDDDDKV</p>
Tag:	C-Myc/DDK
Predicted MW:	47.7 kDa
Concentration:	>0.05 µg/µL as determined by microplate BCA method
Purity:	> 80% as determined by SDS-PAGE and Coomassie blue staining
Buffer:	25 mM Tris-HCl, 100 mM glycine, pH 7.3, 10% glycerol
Bioactivity:	Sulfhydrylation substrate (PMID: 26405298)
Preparation:	Recombinant protein was captured through anti-DDK affinity column followed by conventional chromatography steps.
Note:	For testing in cell culture applications, please filter before use. Note that you may experience some loss of protein during the filtration process.
Storage:	Store at -80°C.
Stability:	Stable for 12 months from the date of receipt of the product under proper storage and handling conditions. Avoid repeated freeze-thaw cycles.



[View online »](#)

RefSeq: [NP_008836](#)

Locus ID: 5669

UniProt ID: [P11464](#)

RefSeq Size: 2306

Cytogenetics: 19q13.2

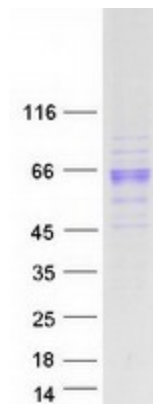
RefSeq ORF: 1278

Synonyms: B1G1; CD66f; DHFRP2; FL-NCA-1/2; PBG1; PS-beta-C/D; PS-beta-G-1; PSBG-1; PSBG1; PSG95; PSGGA; PSGIIA; SP1

Summary: The human placenta is a multihormonal endocrine organ that produces hormones, enzymes, and other molecules that support fetal survival and development. Pregnancy-specific beta-1-glycoprotein (PSBG, PSG) is a major product of the syncytiotrophoblast, reaching concentrations of 100 to 290 mg/l at term in the serum of pregnant women (Horne et al., 1976 [PubMed 971765]). PSG is a member of the immunoglobulin (Ig) superfamily (Watanabe and Chou, 1988 [PubMed 3257488]; Streydio et al., 1988 [PubMed 3260773]).[supplied by OMIM, Oct 2009]

Protein Families: Secreted Protein

Product images:



Coomassie blue staining of purified PSG1 protein (Cat# [TP304978]). The protein was produced from HEK293T cells transfected with PSG1 cDNA clone (Cat# [RC204978]) using MegaTran 2.0 (Cat# [TT210002]).