

## Product datasheet for **TP304978**

### Pregnancy Specific Glycoprotein 1 (PSG1) (NM\_006905) Human Recombinant Protein

#### Product data:

**Product Type:** Recombinant Proteins

**Description:** Recombinant protein of human pregnancy specific beta-1-glycoprotein 1 (PSG1), 20 µg

**Species:** Human

**Expression Host:** HEK293T

**Expression cDNA Clone or AA Sequence:** >RC204978 protein sequence  
**Red**=Cloning site **Green**=Tags(s)

MGTLSAPPCTQRIKWKGLLLTASLLNFWNLPTTAQVTIEAeptkvSEGKDVLLLVHNLQPQLTGYIWKYK  
QMRDLYHYITSYVVDGEIIYGPAYSGRETAYSNASLLIQNVTREDAGSYTLHIIKGGDDGTRGVTGRFTF  
TLHLETPKPSISSNLPRETMEAVSLTCDPETPDASYLWWMNGQSLPMTHSLKLESETNRTLFLLVGVTYK  
TAGPYECEIRNPVSASRSDPVTLNLLPKLPKYITINLNPRENKDVLFNFTCEPKSENYTYIWWLNGQSL  
PVSPRVKRPIENRILILPSVTRNETGPYQCEIRDYGGIRSDPVTLNVLVYGPDLPRIYPSFTYYRSGEVL  
YLSCSADSNPPAQYSWTINEKFQLPGQKLFIRHITTKHSGLYVCSVRNSATGKESSKSMTVEVSGKWIPA  
SLAIGF

**TRTRPLEQKLISEEDLAANDILDYKDDDDKV**

**Tag:** C-Myc/DDK

**Predicted MW:** 47.7 kDa

**Concentration:** >0.05 µg/µL as determined by microplate BCA method

**Purity:** > 80% as determined by SDS-PAGE and Coomassie blue staining

**Buffer:** 25 mM Tris-HCl, 100 mM glycine, pH 7.3, 10% glycerol

**Bioactivity:** Sulfhydrylation substrate (PMID: [26405298](#))

**Preparation:** Recombinant protein was captured through anti-DDK affinity column followed by conventional chromatography steps.

**Note:** For testing in cell culture applications, please filter before use. Note that you may experience some loss of protein during the filtration process.

**Storage:** Store at -80°C.

**Stability:** Stable for 12 months from the date of receipt of the product under proper storage and handling conditions. Avoid repeated freeze-thaw cycles.



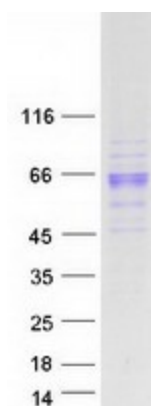
[View online »](#)

RefSeq:	<a href="#">NP_008836</a>
Locus ID:	5669
UniProt ID:	<a href="#">P11464</a>
RefSeq Size:	2306
Cytogenetics:	19q13.2
RefSeq ORF:	1278
Synonyms:	B1G1; CD66f; DHFRP2; FL-NCA-1/2; PBG1; PS-beta-C/D; PS-beta-G-1; PSBG-1; PSBG1; PSG95; PSGGA; PSGIIA; SP1

**Summary:** The human placenta is a multihormonal endocrine organ that produces hormones, enzymes, and other molecules that support fetal survival and development. Pregnancy-specific beta-1-glycoprotein (PSBG, PSG) is a major product of the syncytiotrophoblast, reaching concentrations of 100 to 290 mg/l at term in the serum of pregnant women (Horne et al., 1976 [PubMed 971765]). PSG is a member of the immunoglobulin (Ig) superfamily (Watanabe and Chou, 1988 [PubMed 3257488]; Streydio et al., 1988 [PubMed 3260773]).[supplied by OMIM, Oct 2009]

**Protein Families:** Secreted Protein

### Product images:



Coomassie blue staining of purified PSG1 protein (Cat# TP304978). The protein was produced from HEK293T cells transfected with PSG1 cDNA clone (Cat# [RC204978]) using MegaTran 2.0 (Cat# [TT210002]).