

## Product datasheet for **TP304974M**

### CDC42EP2 (NM\_006779) Human Recombinant Protein

#### Product data:

Product Type:	Recombinant Proteins
Description:	Recombinant protein of human CDC42 effector protein (Rho GTPase binding) 2 (CDC42EP2), 100 µg
Species:	Human
Expression Host:	HEK293T
Expression cDNA Clone or AA Sequence:	>RC204974 protein sequence <b>Red</b> =Cloning site <b>Green</b> =Tags(s)
	 MSTKVPIYLKRGSRKGGKKEKLRDLLSSDMISPLGDFRHTIHIGSGGGSDMFGDISFLQGKFHLLPGTMV EGPEEDGTFDLPFQFTRTATVCGRELPDGPSPLLNKNAISLPVIGGPQALTLPTAQAPPKPPRLHLETPQP SPQEGGSVDIWRIPETGSPNSGLTPESGAEEPFLSNASSLLSLHVDLGPSILDDVLQIMDQDLDSMQIPT  <b>TRTRPLEQKLISEEDLAANDILDYKDDDDKV</b>
Tag:	C-Myc/DDK
Predicted MW:	22.3 kDa
Concentration:	>0.05 µg/µL as determined by microplate BCA method
Purity:	> 80% as determined by SDS-PAGE and Coomassie blue staining
Buffer:	25 mM Tris-HCl, 100 mM glycine, pH 7.3, 10% glycerol
Preparation:	Recombinant protein was captured through anti-DDK affinity column followed by conventional chromatography steps.
Note:	For testing in cell culture applications, please filter before use. Note that you may experience some loss of protein during the filtration process.
Storage:	Store at -80°C.
Stability:	Stable for 12 months from the date of receipt of the product under proper storage and handling conditions. Avoid repeated freeze-thaw cycles.
RefSeq:	<a href="#">NP_006770</a>
Locus ID:	10435
UniProt ID:	<a href="#">O14613</a>



[View online »](#)

RefSeq Size: 2043

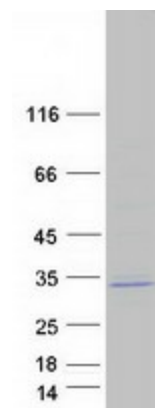
Cytogenetics: 11q13.1

RefSeq ORF: 630

Synonyms: BORG1; CEP2

**Summary:** CDC42, a small Rho GTPase, regulates the formation of F-actin-containing structures through its interaction with the downstream effector proteins. The protein encoded by this gene is a member of the Borg family of CDC42 effector proteins. Borg family proteins contain a CRIB (Cdc42/Rac interactive-binding) domain. They bind to, and negatively regulate the function of CDC42. Coexpression of this protein with CDC42 suggested a role of this protein in actin filament assembly and cell shape control. [provided by RefSeq, Aug 2011]

### Product images:



Coomassie blue staining of purified CDC42EP2 protein (Cat# [TP304974]). The protein was produced from HEK293T cells transfected with CDC42EP2 cDNA clone (Cat# [RC204974]) using MegaTran 2.0 (Cat# [TT210002]).