

## Product datasheet for **TP304941L**

### Kallistatin (SERPINA4) (NM\_006215) Human Recombinant Protein

#### Product data:

Product Type:	Recombinant Proteins
Description:	Recombinant protein of human serpin peptidase inhibitor, clade A (alpha-1 antiproteinase, antitrypsin), member 4 (SERPINA4), 1 mg
Species:	Human
Expression Host:	HEK293T
Expression cDNA Clone or AA Sequence:	>RC204941 protein sequence <b>Red</b> =Cloning site <b>Green</b> =Tags(s)
	<p>MHLIDYLLLLLVGLLALSHGQLHVEHDGESCNSSSHQQILETGEGSPSLKIAPANADFAFRFYLIASET PGKNIFFSPLSISAAYAMLSLGACSHRSQILEGLGFNLTESESDVHRGFQHLLHTLNLPGHGLETRVG SALFLSHNLKFLAKFLNDTMAVYEAKLFHTNFYDVTGTIQLINDHVKKETRGKIVDLVSELKDVDLMVLV NYIYFKALWEKPFISRTTPKDFYVDENTTVRVPMMQLDQEHHWYLDHRYLPCSVLRMDYKGDATVFFIL PNQGKMREIEEVLTPMLMRWNNLLRKRNFYKLELHLPKFSISGSYVLDQILPRLGFTDLFSKWADLSG ITKQKLEASKSFHKATLDVDEAGTEAAAATSFAIKFFSAQTNRHILRFNRPFVIFSTSTQSVLFLGK VVDPTKP</p> <p><b>SGPTRTRPLEQKLISEEDLAANDILDYKDDDDKV</b></p>
Tag:	C-Myc/DDK
Predicted MW:	48.4 kDa
Concentration:	>0.05 µg/µL as determined by microplate BCA method
Purity:	> 80% as determined by SDS-PAGE and Coomassie blue staining
Buffer:	25 mM Tris-HCl, 100 mM glycine, pH 7.3, 10% glycerol
Preparation:	Recombinant protein was captured through anti-DDK affinity column followed by conventional chromatography steps.
Note:	For testing in cell culture applications, please filter before use. Note that you may experience some loss of protein during the filtration process.
Storage:	Store at -80°C.
Stability:	Stable for 12 months from the date of receipt of the product under proper storage and handling conditions. Avoid repeated freeze-thaw cycles.



[View online »](#)

RefSeq: [NP\\_006206](#)

Locus ID: 5267

UniProt ID: [P29622](#), [A0A024R6I9](#)

RefSeq Size: 1700

Cytogenetics: 14q32.13

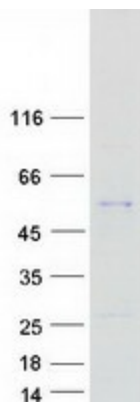
RefSeq ORF: 1281

Synonyms: KAL; kallistatin; KLST; KST; PI-4; PI4

**Summary:** Inhibits human amidolytic and kininogenase activities of tissue kallikrein. Inhibition is achieved by formation of an equimolar, heat- and SDS-stable complex between the inhibitor and the enzyme, and generation of a small C-terminal fragment of the inhibitor due to cleavage at the reactive site by tissue kallikrein.[UniProtKB/Swiss-Prot Function]

**Protein Families:** Druggable Genome, Secreted Protein

### Product images:



Coomassie blue staining of purified SERPINA4 protein (Cat# [TP304941]). The protein was produced from HEK293T cells transfected with SERPINA4 cDNA clone (Cat# [RC204941]) using MegaTran 2.0 (Cat# [TT210002]).