

Product datasheet for **TP304937**

Torsin B (TOR1B) (NM_014506) Human Recombinant Protein

Product data:

| | |
|---------------------------------------|---------------------------------------------------------------------------------------------------------------------------------------------------------------------------------------------------------------------------------------------------------------------------------------------------------------------------------------------------------------------------------------------------------------------------------------------------------------------------------------------------------------------------------------------------------------------------------------------------------------------|
| Product Type: | Recombinant Proteins |
| Description: | Recombinant protein of human torsin family 1, member B (torsin B) (TOR1B), 20 µg |
| Species: | Human |
| Expression Host: | HEK293T |
| Expression cDNA Clone or AA Sequence: | >RC204937 protein sequence Red =Cloning site Green =Tags(s) MLRAGWLRGAAALALLAARVVAAFEPITVGLAIGAASAITGYLSYNDIYCRFAECCREERPLNASALKL DLEEKLFQGHLATEVIFKALTGFRNNKNPKKPLTSLHGWAGTGKNFVSQIVAENLHPKGLKSNFVHLFV STLHFPHEQKIKLYQDQLQKWIRGNVSACANSVFIFDEMDDLHPGIIDAIKPFLDYEQVDGVSYRKAIF IFLSNAGGDLITKTALDFWRAGRKREDIQLKDLEPVLVSGVFNNKHSGLWHSGLIDKNLIDYFIPFLPLE YRHVKMCVRAEMRARGSAIDEDIVTRVAEEMTFFPRDEKIYSDKGCKTVQSRDLFH TR TRPLEQKLISEEDLAANDILDYKDDDDKV |
| Tag: | C-Myc/DDK |
| Predicted MW: | 37.8 kDa |
| Concentration: | >0.05 µg/µL as determined by microplate BCA method |
| Purity: | > 80% as determined by SDS-PAGE and Coomassie blue staining |
| Buffer: | 25 mM Tris-HCl, 100 mM glycine, pH 7.3, 10% glycerol |
| Preparation: | Recombinant protein was captured through anti-DDK affinity column followed by conventional chromatography steps. |
| Note: | For testing in cell culture applications, please filter before use. Note that you may experience some loss of protein during the filtration process. |
| Storage: | Store at -80°C. |
| Stability: | Stable for 12 months from the date of receipt of the product under proper storage and handling conditions. Avoid repeated freeze-thaw cycles. |
| RefSeq: | <u>NP_055321</u> |
| Locus ID: | 27348 |


[View online »](#)

UniProt ID: [O14657](#)

RefSeq Size: 2774

Cytogenetics: 9q34.11

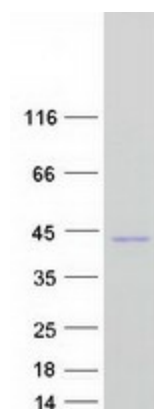
RefSeq ORF: 1008

Synonyms: DQ1

Summary: The protein encoded by this gene is an ATPase found primarily in the endoplasmic reticulum and nuclear envelope. This gene has a highly-similar neighboring gene, TOR1A, that encodes a protein that is likely to interact in a complex with this protein. Finally, this protein may act as a chaperone and play a role in maintaining the integrity of the nuclear envelope and endoplasmic reticulum. Several transcript variants, some protein-coding and others non-protein coding, have been found for this gene. [provided by RefSeq, Dec 2015]

Protein Families: Transmembrane

Product images:



Coomassie blue staining of purified TOR1B protein (Cat# TP304937). The protein was produced from HEK293T cells transfected with TOR1B cDNA clone (Cat# [RC204937]) using MegaTran 2.0 (Cat# [TT210002]).