

## Product datasheet for **TP304931**

### **LENG1 (NM\_024316) Human Recombinant Protein**

#### Product data:

Product Type:	Recombinant Proteins
Description:	Recombinant protein of human leukocyte receptor cluster (LRC) member 1 (LENG1), 20 µg
Species:	Human
Expression Host:	HEK293T
Expression cDNA Clone or AA Sequence:	>RC204931 protein sequence <b>Red</b> =Cloning site <b>Green</b> =Tags(s)

MNILPKKSWHVRNKDNVARVRRDEAQAREEEKERERRVLLAQQEARTFLRKKARHQNSLPELEAAEAGA  
PGSGPVDLFRLEEGKGVIRGNKEYEEERQEKERQEKALGILTYLGQSAEAQTQPPWYQLPPGRGGP  
PPGPAPDEKIKSRLDPLREMQKHLGKKRQHGGDEGSRSRKEKEGSEKQRPKEPPSLDQLRAERLRREAAE  
RSRAEALLARVQGRALQEGQPEDETDDRRRRYNSQFNPQLARRPRQQDPHLTH

**TRTRPLEQKLISEEDLAANDILDYKDDDDKV**

Tag:	C-Myc/DDK
Predicted MW:	30.3 kDa
Concentration:	>0.05 µg/µL as determined by microplate BCA method
Purity:	> 80% as determined by SDS-PAGE and Coomassie blue staining
Buffer:	25 mM Tris-HCl, 100 mM glycine, pH 7.3, 10% glycerol
Preparation:	Recombinant protein was captured through anti-DDK affinity column followed by conventional chromatography steps.
Note:	For testing in cell culture applications, please filter before use. Note that you may experience some loss of protein during the filtration process.
Storage:	Store at -80°C.
Stability:	Stable for 12 months from the date of receipt of the product under proper storage and handling conditions. Avoid repeated freeze-thaw cycles.
RefSeq:	<u><a href="#">NP_077292</a></u>
Locus ID:	79165
UniProt ID:	<u><a href="#">Q96BZ8</a></u>



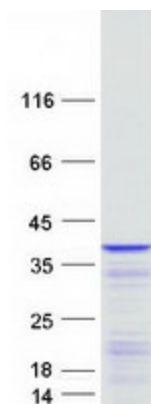
[View online »](#)

RefSeq Size: 941

Cytogenetics: 19q13.42

RefSeq ORF: 792

### Product images:



Coomassie blue staining of purified LENG1 protein (Cat# TP304931). The protein was produced from HEK293T cells transfected with LENG1 cDNA clone (Cat# [RC204931]) using MegaTran 2.0 (Cat# [TT210002]).