

## Product datasheet for **TP304919M**

### **EPS8L1 (NM\_017729) Human Recombinant Protein**

#### Product data:

Product Type:	Recombinant Proteins
Description:	Recombinant protein of human EPS8-like 1 (EPS8L1), transcript variant 2, 100 µg
Species:	Human
Expression Host:	HEK293T
Expression cDNA Clone or AA Sequence:	>RC204919 protein sequence <b>Red</b> =Cloning site <b>Green</b> =Tags(s)

MNRTWPRRIWGSSQDEAELIREDIQGALHNYRSGRGERRAAALRATQEELQRDRSPAETPPLQRRPSVR  
AVISTVERGAGRGRPQAKPIPEAEEAQRPEPVGTSNADSPDLGPRGPD LAVLQAEREVDILNHVFDD  
VESFVSRLQKSAEAAARVLEHRERGRRSRRRAAGEGLTLRAKPPSEAEYTDVLQIKYAFSLLARLRGNI  
ADPSSPELLHFLFGPLQMIVNTSGGPEFASSVRRPHLTSDAVALLRDNVTRENELWTSLGDSWTRPGLE  
LSPEEGPPYRPEFFSGWEPPVTD PQSRAWEDPVEKQLQHERRRRQQSAPQVAVNGHRDLEPESE PQLES  
E  
TAGKWVLCNYDFQARNSSSELSVKQRDVLEVLD DSRKWWKV RDPAGQEGYVPYNILTPYPG PRLHHSQSP  
A  
RSLNSTPPPPAPAPAPPPALARPWRDRPRWDSCDSLNGLDPSEKEKFSQMLIVNEELQARLAQGRSGPS  
RAVPGPRAPEPQLSPGSDASEVRAWLQAKGFSSGTVDALGVLTGAQLFSLQKEELRAVSPEEGARVYSQV  
TVQRSLLLEDKEKVSELEAVMEKQKKKVEGEVEMEVI

**TRTRPLEQKLISEEDLAANDILDYKDDDDKV**

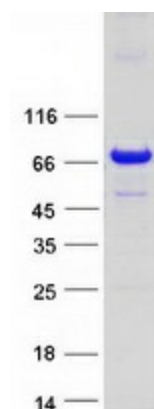
Tag:	C-Myc/DDK
Predicted MW:	66.3 kDa
Concentration:	>0.05 µg/µL as determined by microplate BCA method
Purity:	> 80% as determined by SDS-PAGE and Coomassie blue staining
Buffer:	25 mM Tris-HCl, 100 mM glycine, pH 7.3, 10% glycerol
Preparation:	Recombinant protein was captured through anti-DDK affinity column followed by conventional chromatography steps.
Note:	For testing in cell culture applications, please filter before use. Note that you may experience some loss of protein during the filtration process.
Storage:	Store at -80°C.



[View online »](#)

<b>Stability:</b>	Stable for 12 months from the date of receipt of the product under proper storage and handling conditions. Avoid repeated freeze-thaw cycles.
<b>RefSeq:</b>	<u>NP_060199</u>
<b>Locus ID:</b>	54869
<b>UniProt ID:</b>	<u>Q8TE68</u>
<b>RefSeq Size:</b>	2224
<b>Cytogenetics:</b>	19q13.42
<b>RefSeq ORF:</b>	1788
<b>Synonyms:</b>	DRC3; EPS8R1; PP10566
<b>Summary:</b>	This gene encodes a protein that is related to epidermal growth factor receptor pathway substrate 8 (EPS8), a substrate for the epidermal growth factor receptor. The function of this protein is unknown. At least two alternatively spliced transcript variants encoding different isoforms have been found for this gene. [provided by RefSeq, Jul 2008]
<b>Protein Families:</b>	Druggable Genome

### Product images:



Coomassie blue staining of purified EPS8L1 protein (Cat# [TP304919]). The protein was produced from HEK293T cells transfected with EPS8L1 cDNA clone (Cat# [RC204919]) using MegaTran 2.0 (Cat# [TT210002]).