

Product datasheet for TP304916L

ESRP2 (NM_024939) Human Recombinant Protein

Product data:

Product Type: Recombinant Proteins
Description: Recombinant protein of human epithelial splicing regulatory protein 2 (ESRP2), 1 mg
Species: Human
Expression Host: HEK293T
Expression cDNA Clone or AA Sequence: >RC204916 protein sequence
Red=Cloning site Green=Tags(s)

MTPPPPPPPPGPDPAADPAADPCPWPGSLVWLFGATAGALGRDLGSDETDLILLVWQVVEPRSRQVGT
 HKSLVRAEAAAALSTQCREASGLSADSLARAELDKVLQQFSQLVNGDVALLGGGPYMLCTDGGQQLLRQVL
 HPEASRKNLVLVPMFFSFYDLRREFHMQHPSTCPARDLTVATMAQGLGLETATEDDFGVWEVKTMVAVI
 LHLLKEPSSQLFSKPEVIKQKYETGPCSKADWVSETVVRARGLPWQSSDQDVARFFKGLNVARGGVALC
 LNAQGRRNGEALIRFVDSEQRDLALQRHKHHMGVRYIEVYKATGEEFVKIAGGTSLEVARFLSREDQVIL
 RLRGLPFSAGPTDVLGFLGPECPVTGGTEGLLFVRHPDGRPTGDAFALFACEELAQAALRRHKGMLGKRY
 IELFRSTAAEVQQVLNRYASGPLLPTLTAPLLPIPFPLAPGTGRDCVRLRGLPYTATIEDILSFLGAAA
 DIRPHGVHMLVNLQQGRPSGDAFIQMTSAERALAAAQRCHKVMKERYVEVPCSTEEMSRVLMGGTLGRS
 GMSPPPCKLPCLSPPTYTTFQATPTLIPTETAALYPSSALLPAARVPAAPTPVAYYPGPATQLYLNAY
 YPSPVSPPTTVGYLTPPTAALASAPTSVLSQSGALVRMQGVPYTAGMKDLSVVFQAYQLPADDYTSMPV
 GDPRTVLQAPKEWVCL

TRTRPLEQKLISEEDLAANDILDYKDDDDKV

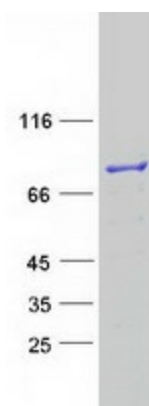
Tag: C-Myc/DDK
Predicted MW: 77.2 kDa
Concentration: >0.05 µg/µL as determined by microplate BCA method
Purity: > 80% as determined by SDS-PAGE and Coomassie blue staining
Buffer: 25 mM Tris-HCl, 100 mM glycine, pH 7.3, 10% glycerol
Preparation: Recombinant protein was captured through anti-DDK affinity column followed by conventional chromatography steps.
Note: For testing in cell culture applications, please filter before use. Note that you may experience some loss of protein during the filtration process.
Storage: Store at -80°C.



[View online »](#)

Stability:	Stable for 12 months from the date of receipt of the product under proper storage and handling conditions. Avoid repeated freeze-thaw cycles.
RefSeq:	NP_079215
Locus ID:	80004
UniProt ID:	Q9H6T0
RefSeq Size:	4021
Cytogenetics:	16q22.1
RefSeq ORF:	2151
Synonyms:	RBM35B
Summary:	ESRP2 is an epithelial cell-type-specific splicing regulator (Warzecha et al., 2009 [PubMed 19285943]).[supplied by OMIM, Aug 2009]

Product images:



Coomassie blue staining of purified ESRP2 protein (Cat# [TP304916]). The protein was produced from HEK293T cells transfected with ESRP2 cDNA clone (Cat# [RC204916]) using MegaTran 2.0 (Cat# [TT210002]).