

Product datasheet for TP304913L

PSMD5 (NM_005047) Human Recombinant Protein

Product data:

Product Type:	Recombinant Proteins
Description:	Recombinant protein of human proteasome (prosome, macropain) 26S subunit, non-ATPase, 5 (PSMD5), 1 mg
Species:	Human
Expression Host:	HEK293T
Expression cDNA Clone or AA Sequence:	>RC204913 protein sequence Red =Cloning site Green =Tags(s)

MAAQALALLREVARLEAPLEELRALHSVLQAVPLNELRQAAELRLGPLFSLLENHREKTTLCVSILER
LLQAMEPVHVARNLRVDLQRGLIHPDDSVKILTLSQIGRIVENS DAVTEILNNAELLKQIVYCIGGENLS
VAKAAIKSLSRISLTQAGLEALFESNLLDDLKSVKMTNDIVRYRYELIIEISSVSPESLNICTTSGLVT
QLLRELTGEDVLRATCIEMVTSLAYTHHGRQYLAQEGVIDQISNIIVGADSDPFSSFYLPGFVKFFGNL
AVMDSPQQICERYPIFVEKVFEMIESQDPTMIGVAVDTVGILGSNVEGKQVLQKTGTRFERLLMRIGHQS
KNAPVELKIRCLDAISSLLYPPEQQTDDLRLMTESWFSSLSRDPLELFRGISSQPFPELHCAALKVFTA
IANQPWAQKLMFNSPGFVEYVWDRSVEHDKASKDAKYELVKALANSKTIAEIFGNPNYLRLRITYLSEGPY
YVKPVSTTAVEGAE

TRTRPLEQKLISEEDLAANDILDYKDDDDKV

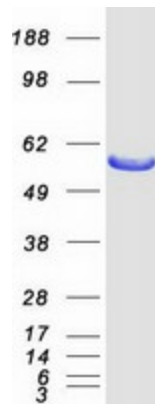
Tag:	C-Myc/DDK
Predicted MW:	56 kDa
Concentration:	>0.05 µg/µL as determined by microplate BCA method
Purity:	> 80% as determined by SDS-PAGE and Coomassie blue staining
Buffer:	25 mM Tris-HCl, 100 mM glycine, pH 7.3, 10% glycerol
Preparation:	Recombinant protein was captured through anti-DDK affinity column followed by conventional chromatography steps.
Note:	For testing in cell culture applications, please filter before use. Note that you may experience some loss of protein during the filtration process.
Storage:	Store at -80°C.



[View online »](#)

Stability:	Stable for 12 months from the date of receipt of the product under proper storage and handling conditions. Avoid repeated freeze-thaw cycles.
RefSeq:	NP_005038
Locus ID:	5711
UniProt ID:	Q16401
RefSeq Size:	3504
Cytogenetics:	9q33.2
RefSeq ORF:	1512
Synonyms:	S5B
Summary:	The 26S proteasome is a multicatalytic proteinase complex with a highly ordered structure composed of 2 complexes, a 20S core and a 19S regulator. The 20S core is composed of 4 rings of 28 non-identical subunits; 2 rings are composed of 7 alpha subunits and 2 rings are composed of 7 beta subunits. The 19S regulator is composed of a base, which contains 6 ATPase subunits and 2 non-ATPase subunits, and a lid, which contains up to 10 non-ATPase subunits. Proteasomes are distributed throughout eukaryotic cells at a high concentration and cleave peptides in an ATP/ubiquitin-dependent process in a non-lysosomal pathway. This gene encodes a non-ATPase subunit of the 19S regulator base that functions as a chaperone protein during 26S proteasome assembly. [provided by RefSeq, Jul 2012]

Product images:



Coomassie blue staining of purified PSMD5 protein (Cat# [TP304913]). The protein was produced from HEK293T cells transfected with PSMD5 cDNA clone (Cat# [RC204913]) using MegaTran 2.0 (Cat# [TT210002]).